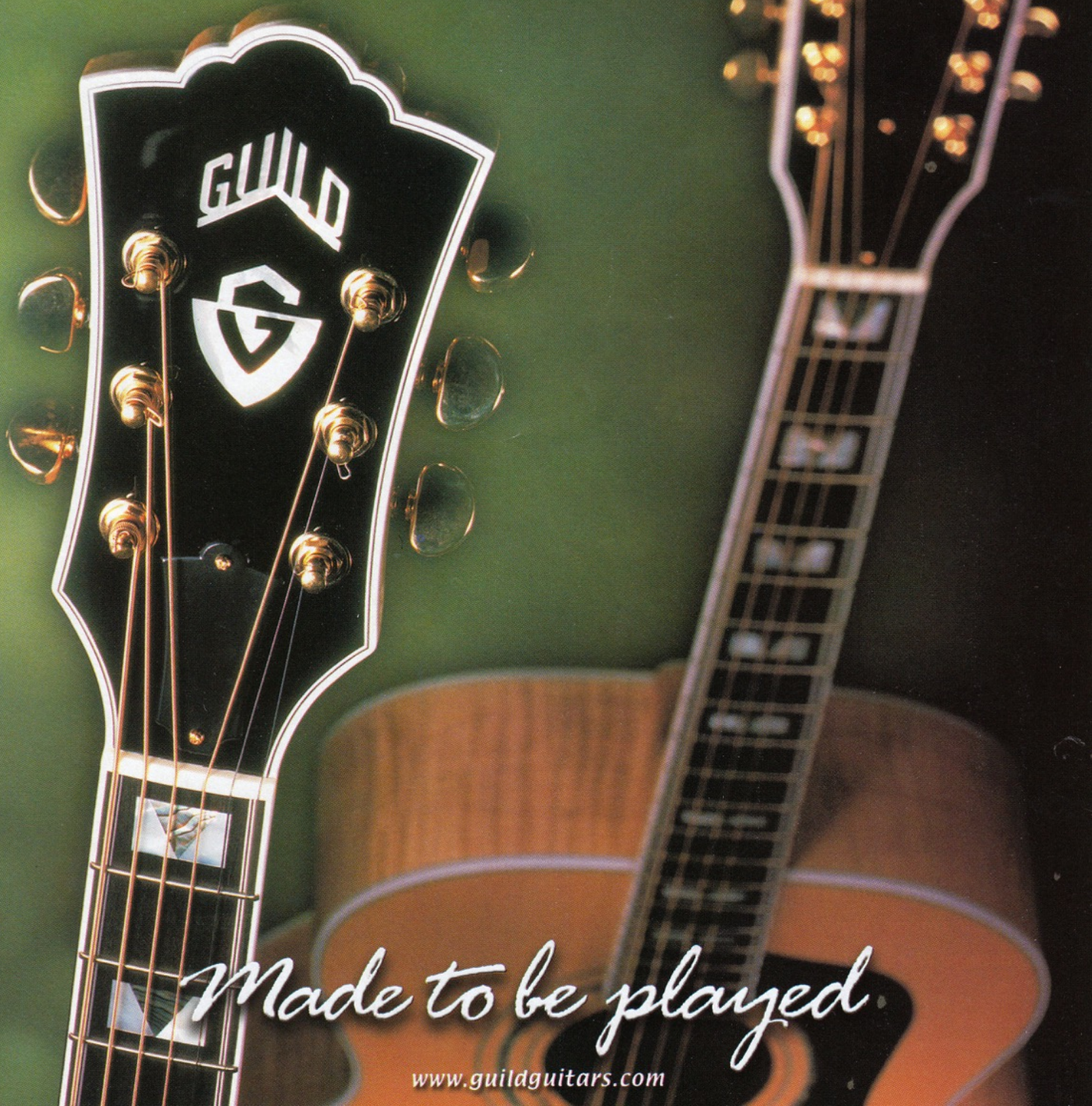




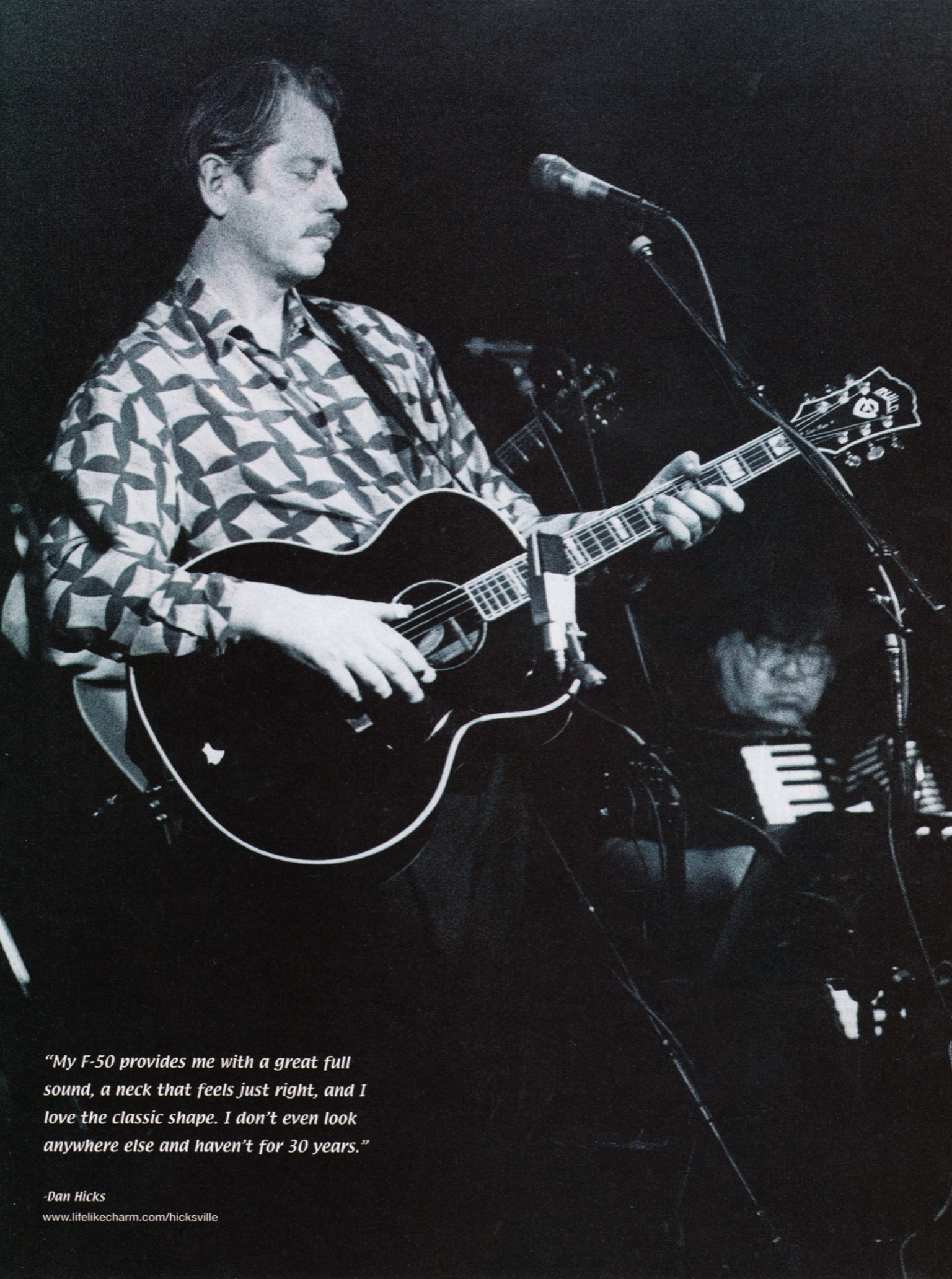
Guild

guitars since 1952



Made to be played.

www.guildguitars.com



"My F-50 provides me with a great full sound, a neck that feels just right, and I love the classic shape. I don't even look anywhere else and haven't for 30 years."

-Dan Hicks

www.lifelikecharm.com/hicksville

*"I've played Guild guitars for 20 years,
and love my X700 Stuart. The neck is
extremely comfortable to play on and
the tone is outstanding."*

-Dan Faehnle

Pictured with his Artist Award

www.teleport.com/~rll/jati/faehnled.htm



Made to be played

Since **1952**, when Guild® began crafting guitars in the **Old World tradition**, our philosophy has been that guitars are **musical instruments**, not status symbols or wall hangings.

Page through our line of fine guitars and look.

We're confident you'll see the consummate skill of **real craftspeople** working with the finest woods.

Listen to the music of any Guild player. We're convinced you'll appreciate the **unique signature sound** of guitar and musician coming together.

Now, **pick up a Guild and play.**

168 Guild Benedetto®

174 Custom Shop

178 Archtops

182 Bluesbirds™

184 Twelve-Strings

185 Jumbos

186 Dreadnoughts


190 Concerts

192 Acoustic Electrics

196 Guild Basses

198 Colors and Options

199 Warranty Information



Artist Award™

X700 Stuart™

Benedetto®

"I've always had a great deal of respect for Guild," says world-renowned luthier Bob Benedetto. "Guild and I have something in common—from the beginning, we both started with archtops." Now that Bob is part of the Guild team, we've brought him into our factory to collaborate with our artisans on a couple of special models. Our flagship archtop jazz guitars, the Artist Award™ and X700 Stuart™, have been updated and refined under Bob's personal direction. Both models now feature 17-inch wide, 3-inch deep bodies of the finest carved European maple and spruce. Pick one up and you'll discover a range of tonal values that will rival any archtop made anywhere in the world.

Features and specifications subject to change without notice

Artist Award™

- Fine-tuned X-braced European spruce top
- Five-piece flame maple neck
- 25-9/16" scale, 1-11/16" select bone nut
- Superfine-lined binding throughout
- Artist Award motif w/Benedetto® Logo inlaid at 19th fret
- Benedetto Model S-6 floating pickup
- Nitrocellulose lacquer finish
- Available in Honey Blonde, Antique Burst or Opulent Brown

X700 Stuart™

- Fine-tuned parallel-braced European spruce top
- Five-piece flame maple neck
- 25-9/16-inch scale, 1-11/16-inch select bone nut
- Superfine-lined binding throughout
- Guild Shield motif w/Benedetto Logo inlaid at 19th fret
- Two Benedetto® Model A-6 built-in pickups
- Nitrocellulose lacquer finish
- Available in Honey Blonde, Antique Burst or Opulent Brown

www.benedetto-guitars.com

For detailed specifications, visit us at www.guildguitars.com

Manhattan™



Fratello™



La Venezia™



Benedetto®

Bob Benedetto has spent decades crafting archtop jazz guitars in his small workshop. Before Bob joined up with the Guild Custom Shop in 1999, the Benedetto® sound and feel was available only to a limited number of players. With the Guild Custom Shop at his side now, Bob is able to offer his masterpieces to more players without compromising quality. Benedetto's full-size archtops feature the finest hand-selected, hand-carved tone woods, as well as the signature Benedetto ebony tailpiece. These expressions of the luthier's art are true to Bob's design and specification. He is involved with every aspect of these instruments from wood selection and carving to final set up and inspection. The Benedetto name signifies the standard by which contemporary archtop guitars are judged.

Features and specifications subject to change without notice.

Manhattan™

- Hand-carved Select European Spruce top
- Hand-carved Select European Maple back and sides
- Select flame American maple neck with burl veneer headstock
- Fine-lined binding throughout • Neo-Classic fingerboard
- 25-inch scale, 21 frets and 1-3/4-inch width at bone nut
- Narrow ebony finger-rest with Benedetto S-6 pickup
- Gold Shaller® M-6 tuning machines with solid ebony buttons
- Nitrocellulose laquer in Honey Blonde or Traditional Sunburst

Fratello™

- Hand-carved Select European Spruce top
- Hand-carved Select European Maple back and sides
- Select flame American maple neck
- Fine-lined binding throughout
- 25" scale, 21 frets and 1-3/4" width at bone nut
- Large mother of pearl fingerboard inlays • Bound pickguard
- Benedetto S-6 pickup • Gold Shaller® M6 tuning machines
- Nitrocellulose lacquer Honey Blonde or Traditional Sunburst

La Venezia™

- Hand-carved Select European Spruce top
- Hand-carved Select European Maple back and sides
- Select flame American maple neck
- Unbound body with delicate violin-style molded edges
- 25" scale, 21 frets and 1-3/4" width at bone nut
- No finger-rest or pickup
- Black Shaller® M-6 tuning machines w/ith solid ebony buttons
- Nitrocellulose lacquer in Traditional Violin shade



"There is no difference between the Guild Custom Shop Benedettos and the guitars I have made in my own shop. I personally did the training, and the guitars are made and set up exactly as I do it myself."

- Bob Benedetto
www.benedetto-guitars.com
shown here carving a spruce top

*"Bob's guitars are over-the-top.
When it comes to jazz guitars,
there isn't even a close second."*

- Jimmy Bruno

www.jimmybruno.com

shown here with his Benny 7™





Benny™



Benny 7™

Benedetto®

The craftsmen at Guild's Custom Shop have put their formidable skills behind the building of Bob Benedetto's guitar designs, both the full-bodied archtops and Bob's smaller-bodied models such as the Benny™, and Benny 7™. Designed to meet the standards of professional players. These stunning mini-archtops feature bodies carved from solid Mahogany and tops carved from Sitka spruce. Bob Benedetto's high standards for material selection and craftsmanship must be met with the Benny models just like the full size archtops. If you're looking for the tone of a big jazz box but need the compact comfort of a smaller guitar, these Benedettos were made for you.

Benny™

- Chambered mahogany body w/ carved sitka spruce top
- Mahogany neck with select ebony fingerboard
- 25-inch scale, 22 frets and 1-3/4-inch width at ebony nut
- 2 Benedetto B-6 pickups with volume and tone controls
- Gold Badass bridge and Schaller M-6 tuners w/ebony buttons
- Nitrocellulose lacquer in Natural, Claret or custom colors

Benny 7™

Same specs as Benny with the following exceptions:

- Seven strings
- Width at nut 2-1/4 inches
- Two Benedetto B-7 pickups, Tune-o-matic™ style bridge
- Ebony Tailpiece



Deco™



Valencia™



SC3 Paloma™

Custom Shop

Guild's Custom Shop is more than just Bob Benedetto's production team—they are some of the most talented and versatile guitar builders in the world. From servicing the large Nashville artist community with decked-out acoustics to pioneering chambered-body acoustic-electrics for everyday working musicians, the Custom Shop has covered more sonic territory than the average musician. Every guitar is built on the foundation of solid design, executed with the utmost care and workmanship by devoted human hands. The originality just seems to happen naturally.

Deco™

- Dreadnought body • Solid rosewood back and sides
- Solid spruce top, scallop-braced
- 25-5/8-inch scale, 20 fret and 1-11/16 inches at bone nut
- Three-piece mahogany neck
- Ebony fretboard and custom inlay
- Nitrocellulose lacquer in Natural

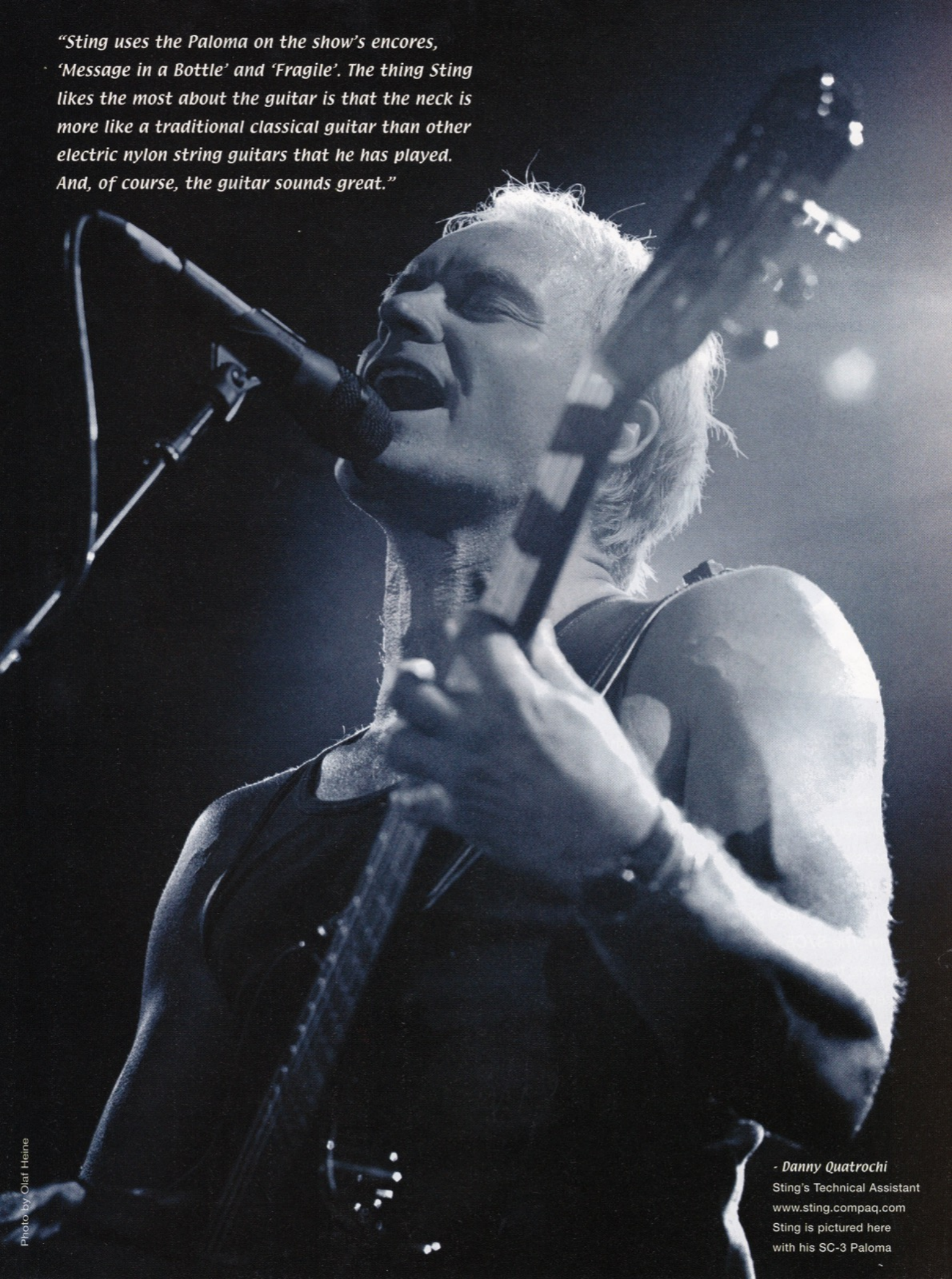
Valencia™

- 16-inch F40 body style • Solid spruce top, scallop braced
- Solid flame maple back and sides
- 25-5/8-inch scale, 20 fret and 1-11/16 inches at bone nut
- Five-piece maple neck, ebony fretboard and custom inlay
- Nitrocellulose lacquer in Blonde, Antique Burst or Black

SC3 Paloma™

- Nylon-string, chambered mahogany body, solid spruce top
- Mahogany neck, ebony fretboard, classic slotted headstock
- 25-5/8-inch scale, 15 frets clear of body
- 20-inch radius neck, 1-13/16 inches at nut
- Custom Fishman® Acoustic Matrix electronics
- Nitrocellulose lacquer in Classic Amber or Black

“Sting uses the Paloma on the show’s encores, ‘Message in a Bottle’ and ‘Fragile’. The thing Sting likes the most about the guitar is that the neck is more like a traditional classical guitar than other electric nylon string guitars that he has played. And, of course, the guitar sounds great.”



Crossroads™



Peregrine Custom™



Custom Shop

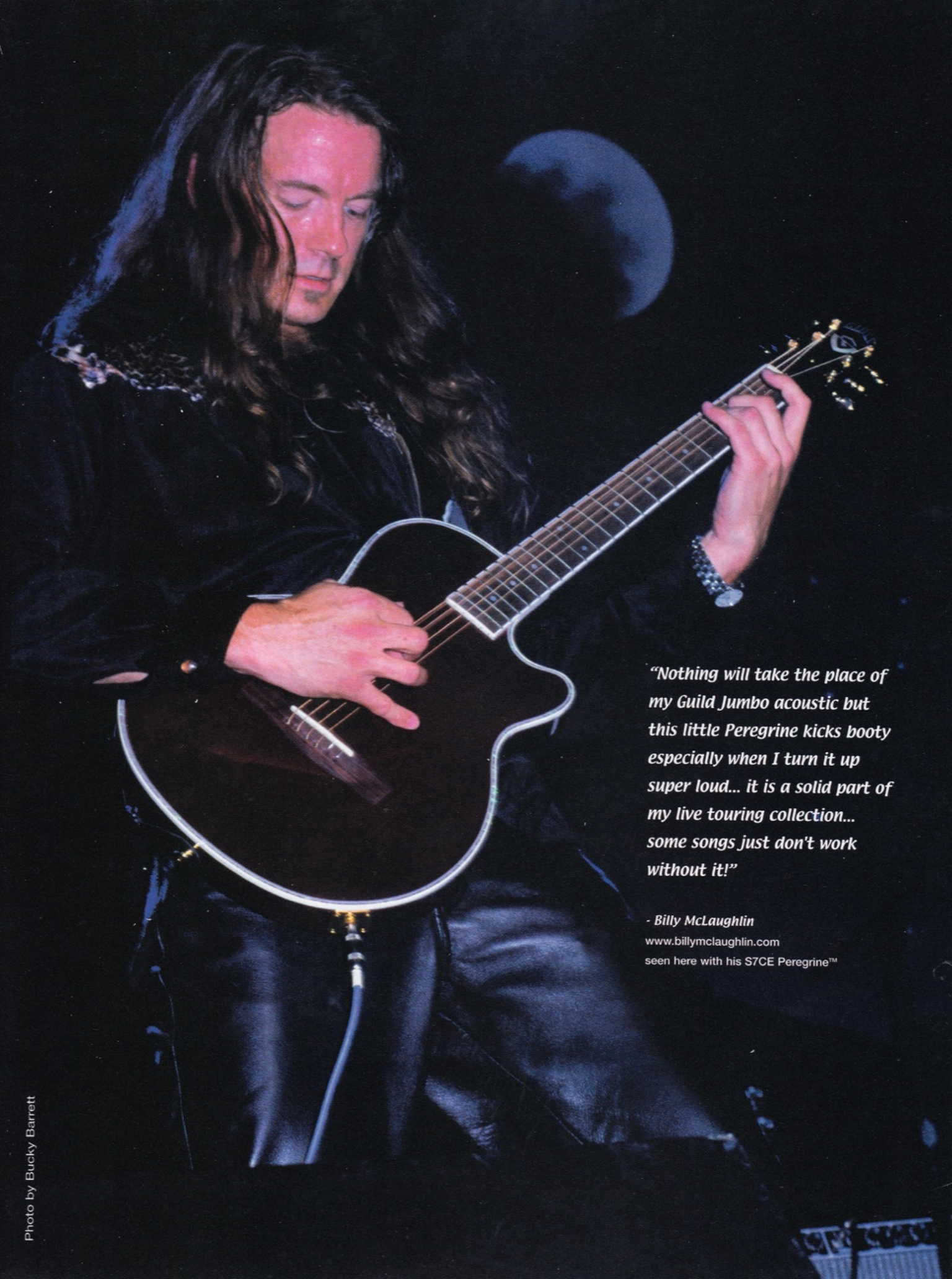
*In addition to building dazzling specialty line pieces like the Benedetto archtops, the Guild Custom Shop creates countless one-offs for high-profile artists and everyday players alike. Often, these custom pieces are simply slight variations on standard Guild models, but every once in a while, a player will come along with an idea so interesting that a new guitar is born. The S7CE was developed for Johnny Rzeznik, as was the Crossroads™ for Slash (an invention licensed from ...) *see Crossroads page on Guild website. In each case, the craftsmen at the Custom Shop addressed the artist's specific tone needs. So use your imagination, see your guitar dreams come true, let your Guild Dealer and our Custom Shop help you find the guitar that's "Made to be Played" by you.*

Crossroads™

- Chambered all-mahogany body / solid under 6-string
- Maple top with special sound hole under 12-string
- Two 24-3/4-inch scale mahogany necks, 6-string and 12-string
- Abalone and pearl block inlay on 6-string, pearl dot on 12-string.
- Slash model Seymour Duncan® pickups
- Fishman® Acoustic Matrix™ Natural with custom preamp
- Available in Standard or AAA versions
- Nitrocellulose Lacquer
- Custom Colors

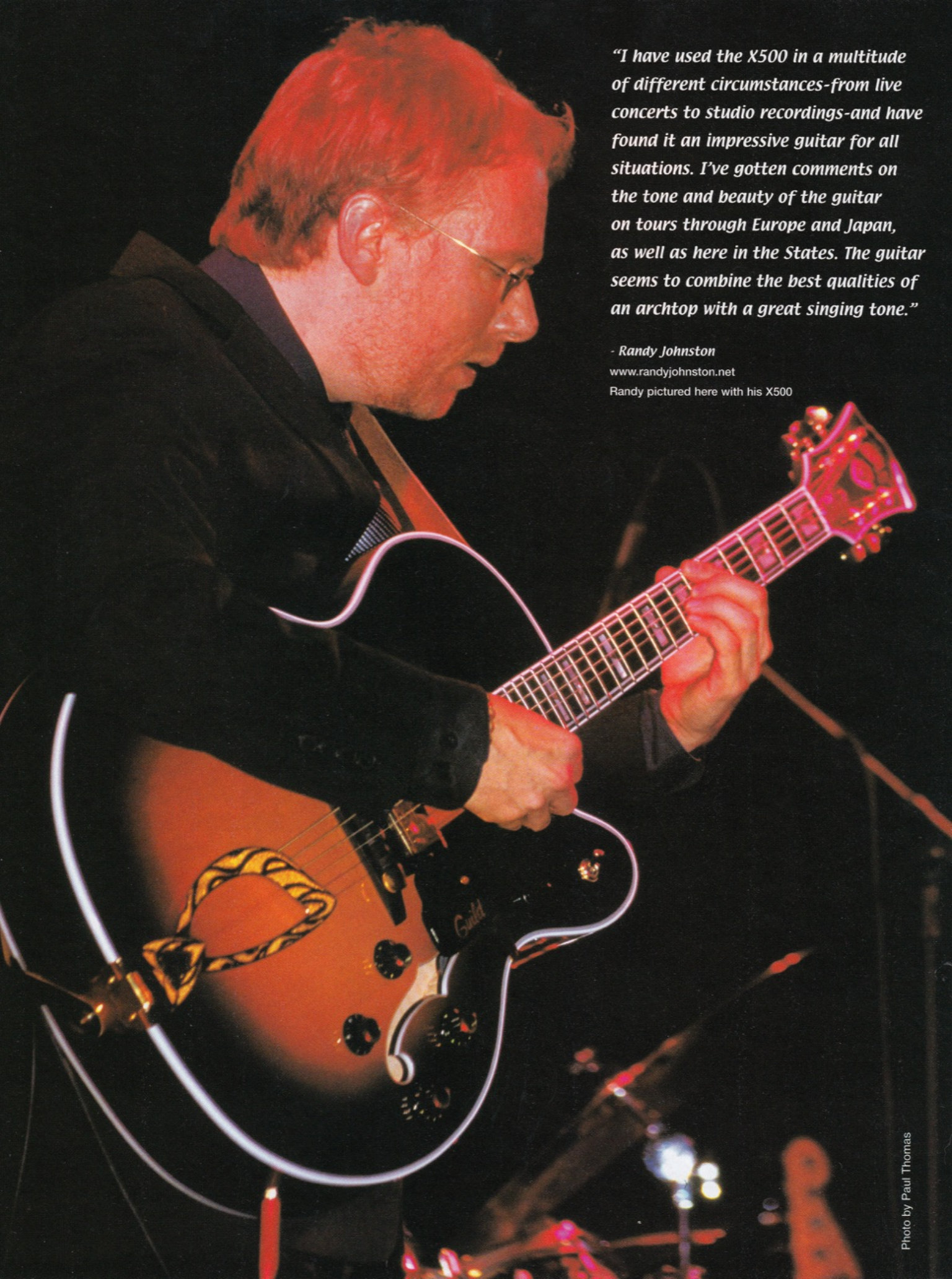
S7CE Peregrine™ Custom / Standard

- Chambered solid mahogany body, abalone binding
- Mahogany neck, bound rosewood fretboard and bridge
- Guild Shield logo with pearl dot inlays
- Fishman® Acoustic Matrix™ Natural with Custom Preamp
- Lacquer finish in Chestnut, Black or Crimson Red
- S7CE Peregrine™ Standard—No abalone binding



"Nothing will take the place of my Guild Jumbo acoustic but this little Peregrine kicks booty especially when I turn it up super loud... it is a solid part of my live touring collection... some songs just don't work without it!"

- Billy McLaughlin
www.billymclaughlin.com
seen here with his S7CE Peregrine™



"I have used the X500 in a multitude of different circumstances—from live concerts to studio recordings—and have found it an impressive guitar for all situations. I've gotten comments on the tone and beauty of the guitar on tours through Europe and Japan, as well as here in the States. The guitar seems to combine the best qualities of an archtop with a great singing tone."

- Randy Johnston

www.randyjohnston.net

Randy pictured here with his X500



X500™



X500T™



X170™

Archtops

The Guild laminated archtop series reaches out to the future with its roots solidly planted in the earliest history of Guild. The X500, X500T and X170 pictured here, as well as the X160 and X150 on the following page, are direct descendants of the 1953 and 1954 models. The X500 is a premier choice for the serious jazz guitarist, its classic body design, special design humbucking pickups and comfortable neck never fails to please the eyes and ears. The X500T offers the ultimate Rockability alternative. The Seymour Duncan® P90s and a gold Bigsby® tremolo transforms the formal X500 into a Mr. Hyde that's ready to rock around the clock.

Guild's Manhattan X175 model dates back to 1954 but the current construction limits feedback. The X170T adds the gold Bigsby® option to Guild's most comfortable jazz guitar.

Features and specifications subject to change without notice

X500 / X500T Paladin

- Laminated flame maple 17 inches wide, 3-3/8" deep body
- Spruce top, multiple bound body and F-holes
- Bound 5-piece maple neck 24-3/4" scale 1-11/16" at nut
- Guild Shield motif, abalone and pearl on ebony fretboard
- X500—Gold Guild Humbucking pickups and gold hardware
- X500—Blonde, Antique Burst
- X500T—Black Seymour Duncan® P90s, gold Guild Bigsby®
- X500T—Blonde, Tennessee Orange

X170 / X170T Manhattan™

- Bound laminated flame maple body 16" wide, 2 1/2" deep
- Bound 3-piece maple neck 24-3/4-inch scale, 1 11/16" at nut
- Guild "Chesterfield" motif, pearloid block inlay on rosewood
- Guild Humbucking pickups, gold hardware throughout
- Blonde, Antique Burst, Tennessee Orange
- X170T—Bigsby® tailpiece



Archtops

The X150 and X150D Savoy guitars let you know right away that straightahead jazz is what they came to play. Of course the player decides what style of music a guitar will play but these two archtops are made for jazz. The X150 has one special design humbucking pickup with one volume and one tone control and therefore has superior acoustic response. The X150D has two of each and offers the player more tonal variety when amplified. The X160 Rockabilly uses the same body and neck as the X150, but that's where the similarity ends. The hot colors and hotter single coil DeArmond® Model 2000 pickups transforms this jazz guitar into an axe that can only be called the Rockabilly. In test after test, reviewers have raved about the X160. Matt Blackett in review for the May 2000 issue of *Guitar Player Magazine* says, "If you're prowling for a guitar that can purr and bite, this will do that and then some."

X160 Rockabilly™

- Bound laminated maple body 16 1/4" inches wide, 3-1/2" deep
- Bound mahogany neck 24-3/4-inch scale, 1-11/16" at nut
- Guild "Chesterfield" motif pearloid block inlay on rosewood
- DeArmond® Model 2000 pickups chrome, Guild Bigsby®
- Gloss Black, Metallic Blue, Tennessee Orange, Fiesta Red

X150 / X150D Savoy™

- Bound, laminated maple body 16 1/4" inches wide, 3-1/2" deep
- Bound mahogany neck 24-3/4-inch scale, 1-11/16" at nut
- Guild "Chesterfield" motif pearloid block inlay on rosewood
- Guild Humbucking pickups—X150 has one, X150D has two
- Available in Blonde or Antique Burst



Starfires

Renowned as the most versatile of Guild's many guitar styles, the Starfire series is at home with jazz, rock, country or blues, you name it. These thinline cutaway archtops have traveled the world with artist of all styles. All the Starfires are road-worthy warriors whose dependable construction can be counted on night after night. The Starfire II and III are single cutaway fully hollow body instruments. The difference in the models is the Starfire II features Guild's Harp tailpiece while the Starfire III features a Bigsby® tailpiece. The newest old addition to this venerable axe is the Starfire III-90 that substitutes Seymour Duncan® P90 pickups for the stock Guild special design humbuckings. The Starfire IV and V are double cutaway, semi hollow body guitars. The difference again is the tailpiece selection, but, in this case, the Starfire V also features a block inlaid rosewood fretboard. All the Starfires are real values their performance, construction and playability are second to none.

Starfire™ II / Starfire™ III / Starfire™ III 90

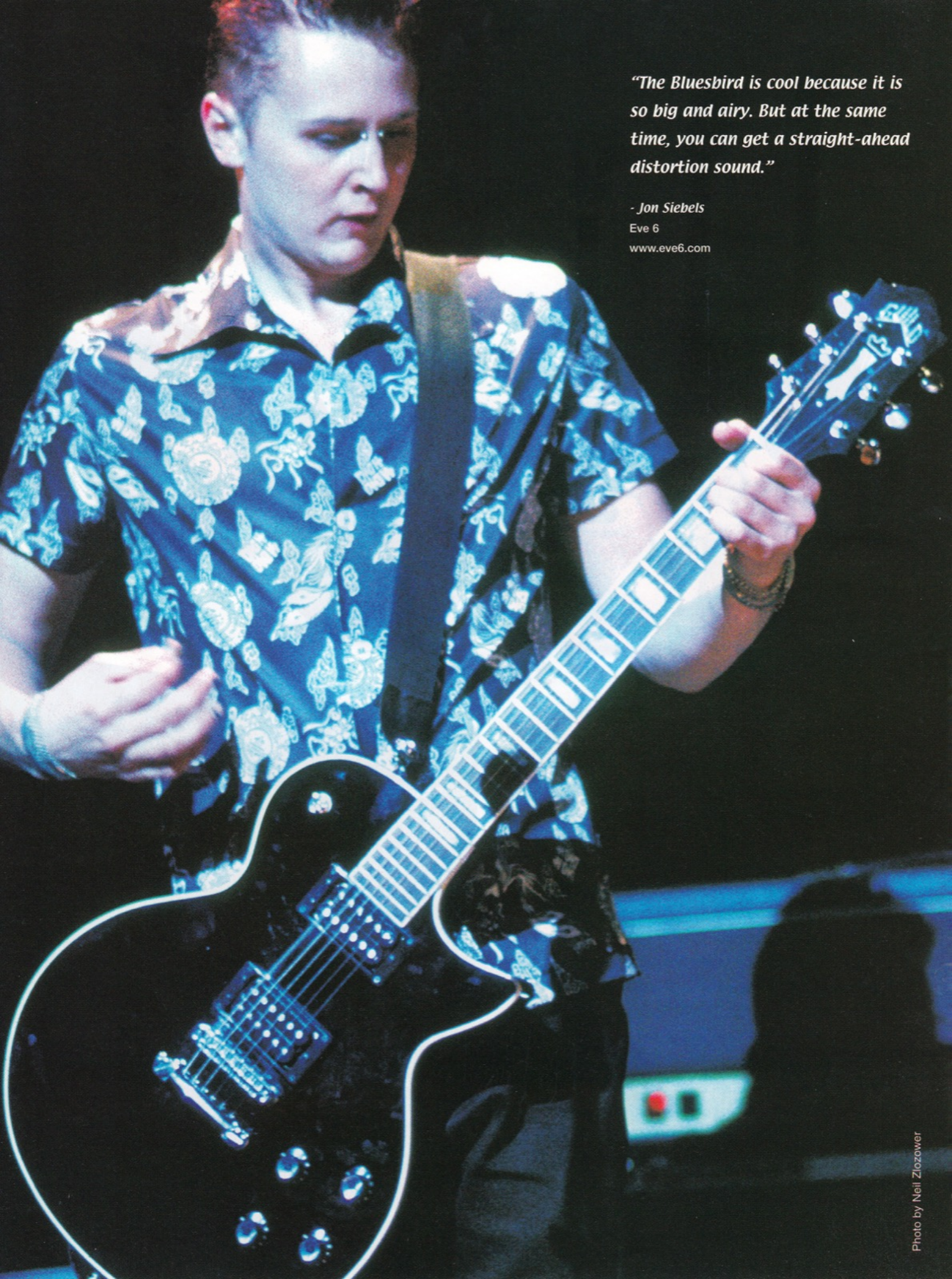
- Florentine single cutaway hollow body
- Mahogany neck, 24-3/4-inch scale, 1-11/16 inches at nut
- "Chesterfield" motif with pearl dots on rosewood fretboard
- Two Guild Humbucking pickups, chrome hardware
- Starfire II—Harp tailpiece and rosewood bridge
- Starfire III—Bigsby® tailpiece and bridge
- Blonde, Antique Burst, Black, Trans Red

Starfire™ IV

- Double cutaway, semi-hollow body
- 3-piece mahogany neck
- 24-3/4-inch scale, 1-11/16 inches wide at nut
- "Chesterfield" motif with pearl dots on rosewood fretboard
- Two Guild Humbucking pickups, chrome hardware
- Adjust-o-matic™ Bridge with stop bar
- Blonde, Antique Burst, Black, Trans Red

Starfire™ V

- Double cutaway, semi-hollow body maple only
- Three-piece mahogany neck
- 24-3/4-inch scale, 1-11/16 inches at nut
- "Chesterfield" motif with block inlay on rosewood fretboard
- Two Guild Humbucking pickups, chrome hardware
- Guild Bigsby® Model 7 tailpiece and bridge.
- Blonde, Antique Burst, Tennessee Orange, Emerald Green



"The Bluesbird is cool because it is so big and airy. But at the same time, you can get a straight-ahead distortion sound."

- Jon Siebels

Eve 6

www.eve6.com



Blues 90

Bluesbird™ AAA

Bluesbird™ Standard

Bluesbirds

Simply put, the Guild Bluesbird™ is not what you think it is. The lineage of today's Bluesbird model traces back to the Guild Aristocrat, a honey-I-shrunk-the-jazzbox model of the 1950s. But that was then. Now the Bluesbird has become far more versatile. Not a clone of the old or any other brand, the body is carved from a solid mahogany block, making it crunch with authority, wail with feeling and moan with soul, all without giving up its jazzy heritage. Available in three variations, the Bluesbird and Bluesbird AAA are identical except for wood selection and color variation—the Triple-A's feature highly figured maple tops. Our new variation, the Blues 90, puts a pair of Seymour Duncan® P90s on the case.

Blues 90

- Chambered solid mahogany body • Carved, figured maple top
- Mahogany neck 24-3/4-inch scale • 1-11/16 inches at nut
- "Chesterfield" motif with dot inlays on rosewood fretboard
- Two Seymour Duncan P90 pickups, chrome hardware
- Black Cherry, Emerald Green or Ebony transparent finishes

Bluesbird™

- Chambered solid mahogany body
- Carved, figured maple top • Bound mahogany neck
- 24-3/4-inch scale • 1-11/16 inches at nut
- "Chesterfield" motif with block inlays on rosewood fretboard
- Two Seymour Duncan® Humbucking pickups
- Chrome hardware, Adjust-o-matic™ bridge, stop bar
- AAA—Amber, Cherry Sunburst and Tobacco Sunburst finishes
- Standard—Black, Gold and Transparent Red finishes



Twelve-Strings

The quality and viability of our jumbo-style 12-string guitars have garnered Guild a permanent place in guitar history. As guitar historians Tom and Mary Anne Evans once wrote, the basic virtue of Guild 12-strings is that they are "very loud and [have] a clarity and definition of sound not normally associated with 12-string guitars." One of the keys to achieving that clarity and definition is the stout, durable style of construction that our craftsmen employ. While body size and scale length are the same as our six-string jumbos, our 12-strings are 1-13/16 inches wide at the nut, feature our double truss rod system and pack a specially engineered bracing pattern. If you think 12-string guitars have to be tuned down and capoed up, you've never played a Guild. So do yourself a favor, go play a real 12-string, play a Guild.

JF212XL

- Solid spruce top with custom 12-string bracing
- Solid mahogany back and sides
- Guild "Chesterfield" motif with pearl dot inlay
- Three-piece mahogany neck with ebony fretboard
- Available in Natural and Antique Burst

JF30-12

- Solid Spruce with custom 12-string brace pattern
- Solid curly maple sides and laminated curly maple back
- Guild "Chesterfield" motif with pearl dot inlay
- Three-piece mahogany neck with ebony fretboard
- Available in Blonde, Black, Antique Burst, custom colors

JF55-12

- Solid spruce top with custom 12-string bracing
- Solid rosewood back and sides
- Classic Guild Shield design, abalone and pearl inlays
- Three-piece mahogany neck with ebony fretboard
- Available in Natural and Antique Burst

JF65-12

- Solid spruce top with custom 12-string brace pattern
- Solid curly maple sides, laminated curly maple back
- Guild Shield design with abalone and pearl inlays
- Three-piece mahogany neck with ebony fretboard
- Available in Blonde and Antique Burst



JF30



JF55



JF65

Jumbos

Nothing sings out as bold and true as a Guild jumbo-style acoustic guitar. Guild is the only American manufacturer that selects and grades its wood from the raw lumber. From the beauty of the spruce, to the elegance of the rosewood, to the shine of the nitrocellulose finish, we stand proudly behind the quality of our materials. Guild jumbos are 17 inches wide at the lower bout. The necks are 25-5/8 inches in scale, have 20 frets, are 1-11/16 inches wide at the nut and have a 12-inch radius. If you're a player who likes the heft and projection of a real solid-wood acoustic, our jumbos are for you. They're built to last, and the tone is as sweet as the smell of sawdust on a spring morning.

JF30

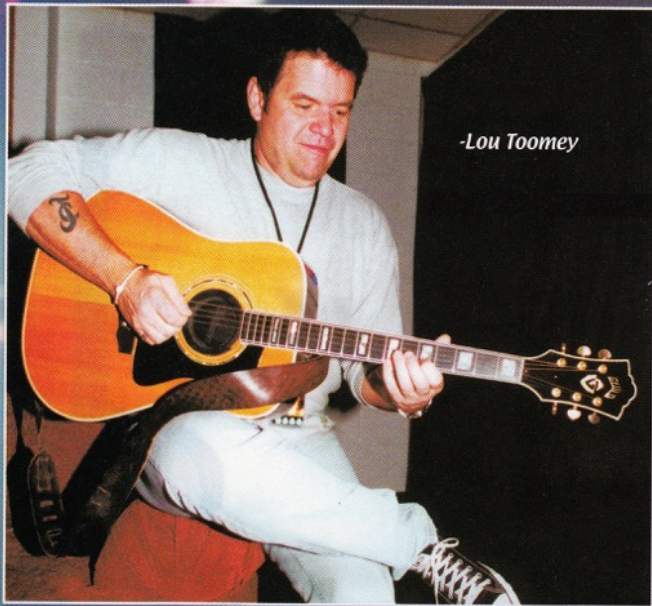
- Solid spruce with standard X bracing
- Solid curly maple sides and laminated curly maple back
- Guild "Chesterfield" headstock motif and pearl dot inlays
- Three-piece maple neck with rosewood fretboard
- Available in Blonde, Black and Antique Burst

JF55

- Solid spruce top with shaved X bracing
- Solid rosewood back and sides
- Classic Guild Shield design with abalone and pearl inlays
- Three piece mahogany neck with ebony fretboard
- Available in Natural and Antique Burst

JF65

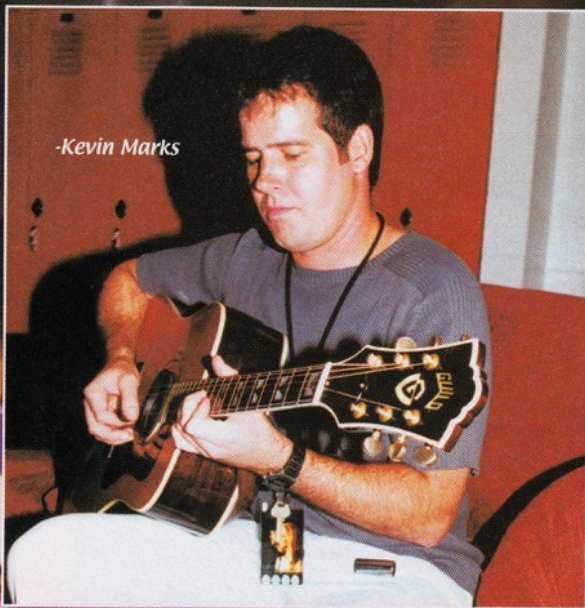
- Solid spruce top with shaved X bracing
- Solid flame maple sides and laminated, flame maple back
- Classic Guild Shield design with abalone and pearl inlays
- Three-piece mahogany neck with ebony fretboard
- Available in Blonde and Antique Burst



-Lou Toomey



-Dan Kelly



-Kevin Marks



D55



D100

Dreadnoughts

We have been building dreadnought-style acoustic guitars in our Westerly, Rhode Island, factory since the '60s. Since that time, musical styles have come and gone, but the dreadnought remains the most popular acoustic. Our D100 and D55—Guild's flagship models—are showpieces without peer, but the true magic lies not in the select woods and stunning workmanship that complement the sturdy construction. The magic of a Guild dreadnought lies in its tone and responsiveness. If you want a featherweight guitar that sounds good in the living room but flatlines at your first gig, go somewhere else. A Guild rises to any occasion and never loses its unique tonal character.

D55

- Solid spruce top with scalloped X bracing
- Solid rosewood back and sides
- Classic Guild Shield design with abalone and pearl inlays
- Three piece mahogany neck with ebony fretboard
- 25-5/8-inch scale length
- 1-11/16-inch width at the bone nut
- Available in Natural and Antique Burst

D100

- Solid spruce top with scalloped X bracing
- Solid rosewood back and sides with custom maple binding
- Custom abalone rosette, body inlays and neck inlays
- Hand-carved mahogany neck and ebony fretboard
- 25-5/8-inch scale length
- 1-11/16-inch width at the bone nut
- Gold Grover® Rotomatic™ tuning machines w/ Imperial buttons
- Available in Natural and Antique Burst



D30



D40



DV52

Dreadnoughts

Ask any Guild artist why they chose a Guild over the many other options available to them, and you'll get the same answer: they need a guitar that performs, day in and day out. Cosmetics and weight are nice, but above all, the balance of tone and feel needs to be there. Our dreadnought guitars are all 15-3/4 inches wide and 5 inches deep, crafted of the finest traditional tone woods. The full-bodied, high-volume sound of the dreadnought body style has been developed with an emphasis on string-to-string balance, so that treble, mid and bass registers project evenly. The result is the most musically versatile dreadnought anywhere. Whether you're into miniature orchestras of fingerstyle virtuosity or big-ol' open chords, play a Guild and hear the difference for yourself.

D30

- Solid spruce with scalloped X bracing
- Solid curly maple sides and laminated curly maple back
- Guild "Chesterfield" motif and pearl dot inlays
- Three-piece maple neck with rosewood fretboard
- Available in Blonde, Black, Antique Burst and Tennessee Orange

D40

- Solid spruce top with shaved X bracing
- Solid mahogany back and sides
- Guild "Chesterfield" motif with pearl dot inlays
- One piece mahogany neck with rosewood fretboard
- Available in Natural and Antique Burst

DV52

- Solid spruce top with scalloped X bracing
- Solid rosewood back and sides
- Guild "Chesterfield" motif with pearl dot inlays
- One-piece mahogany neck with ebony fretboard
- Available in Natural and Antique Burst
- DV52—Satin finish nitrocellulose lacquer
- DV52HG—High-gloss nitrocellulose lacquer



D25



D4

Dreadnoughts

Dreadnought guitars are the most recognized style of guitar in the world. The sameness with which they are perceived, especially when lined up on the wall in your local music store makes a lot of people think they are all the same but nothing could be farther from the truth. The hallmark of the lowest price points it holds true. The D4 and D25 are the basic Guild dreadnoughts; they both exhibit the string-to-string balance that Guild player's prize. The D4 has our exclusive hand rubbed finish. The D25, which is structurally the same, has Guild's traditional high gloss nitrocellulose lacquer finish. The D4/D25 tops are made of solid Sitka spruce that is hand selected from raw lumber supplies. The braces for those tops are cut and processed in our own facility from our own raw lumber supplies. The braces for these tops are cut and processed in our own facility from those same supplies. The mahogany necks and sides are cut from our own lumber supplies of the world's most popular tone wood. The arch backs are formed in our factory from solid wood veneers of mahogany and maple. Guild dreadnoughts are made by hand in our factory, they are "Made to be Played".

Features and specifications subject to change without notice

D25

- Solid spruce top, solid mahogany sides
- One-piece mahogany neck
- 25-5/8-inch scale length, 1-11/16-inch width at the nut
- Rosewood fretboard and bridge
- D25—Arched mahogany back
- D25—Nitrocellulose finish available in Natural, Black and Antique Sunburst

D4

- Solid spruce top, solid mahogany sides
- One-piece mahogany neck
- 25-5/8-inch scale length, 1-11/16-inch width at the nut
- Rosewood fretboard and bridge
- D4—Arched mahogany back
- D4—Satin finish available in Natural Hand-Rubbed(D4HR) or Natural Gloss (D4G)



...found for two years
on our last low trying
to find a good acoustic
guitar tone. Finally,
I looked up with the guys
at Guild and put it all

M20



F30RL



Concerts

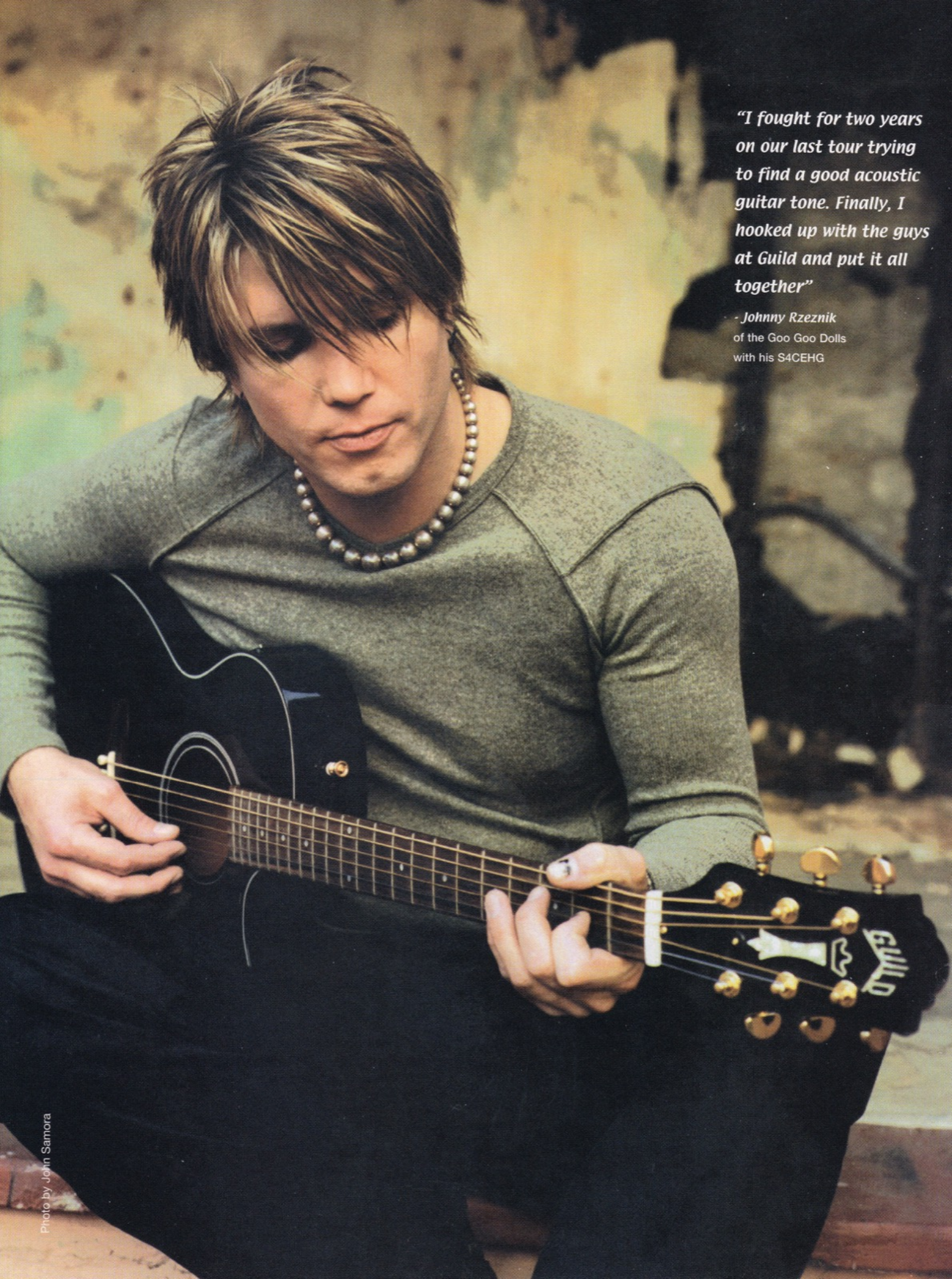
Guild's small concert body style guitars are perfect for sitting on the porch and relaxing with your own homemade music. But they are also at home on a concert stage, in the coffee house scene or in the recording studio. Versatile, comfortable, balanced and clear are all accurate descriptions of these sweet little axes. Since the 1950s, Guild has been building great little guitars. Though not as well-known as the more popular jumbos and dreadnoughts, the M20 and F30 guitars are built to last and made to be played.

M20/M20 HG

- Solid mahogany top with Hoboken X-brace
- Solid mahogany back and sides, 13-3/4-inch body
- 24-3/4-inch scale length with 1-11/16-inch nut
- Mahogany neck with rosewood fretboard and bridge
- Guild "Chesterfield" motif with pearl dot inlays
- M20 Hand-Rubbed Satin Natural Mahogany
- M20HG high gloss nitro cellulose lacquer Natural Mahogany

F30RL

- Solid spruce top with Hoboken X-brace
- Solid rosewood back and sides, 15-inch body
- 25-5/8-inch scale length with 1-11/16-inch nut
- Mahogany neck with ebony fretboard
- Guild "Chesterfield" motif with pearl dot inlays
- Available in Natural and Antique Burst



"I fought for two years on our last tour trying to find a good acoustic guitar tone. Finally, I hooked up with the guys at Guild and put it all together"

*- Johnny Rzeznik
of the Goo Goo Dolls
with his S4CEHG*



F65CE

S4CEHG

S4CEBG

Acoustic-Electrics

Players come to acoustic-electric guitars from many different backgrounds, and they bring many different needs and expectations to the table. At Guild, we believe that the test is in the tone, the proof is in the performance. Over the past several decades, Guild has refined our design and construction processes to the point that we can securely offer one of the widest ranges of fine, American-made acoustic-electric guitars. The specialty acoustic-electrics on this page fit the big stage side of life, providing a purity and clarity of amplified tone rarely found in any price range.

F65CE

- 2-1/2-inch deep, 16-inch wide flame maple body
- Solid spruce top with oval sound hole and abalone rosette
- 3-piece maple neck, ebony fretboard
- Width at nut: 1-5/8 inches; scale length: 25-5/8 inches
- Guild Shield motif with abalone and pearl inlays
- Lacquer finish in Blonde, Black, Antique Burst, Crimson Red or Emerald Green

S4CEHG / S4CEHR

- Solid mahogany body with full routed acoustic chamber
- Solid spruce top with special 3 1/2" round sound hole
- Mahogany neck, 24 3/4" scale, 1 11/16" at nut
- Chesterfield motif with pearl dots on rosewood fretboard
- Fishman Matrix Pro System
- S4CEHG—Gloss finish in Natural or Black
- S4CEHR—Hand-rubbed satin finish, Natural only

S4CEBG

- Barry Gibb signature model
- Same specifications as S4CEHG above
- Custom gloss finish in Metallic Blue or Crimson Red



DCE1HG



DCE3



DCE5

Acoustic-Electrics

Back in the old days, an acoustic-electric was a regular acoustic with one of a variety ad-hoc soundhole pickups affixed to it. Over the years, the concept has grown, and now sophisticated engineering work goes into the design of both the pickup system and the guitar that will house it. Guild has worked with Larry Fishman since 1982 to develop the best-sounding pickup and preamp systems. Our long-standing mutual collaboration is a key to the success of the Guild acoustic-electric. Pick one up, plug it in and compare. You can hear the wood sing.

DCE1HG / DCE1HR

- Mahogany body, solid spruce top, mahogany neck, rosewood bridge
- Guild Logo with pearl dot on morado fretboard
- Fishman® Prefix Pro™ System
- DCE1HG—Lacquer finish in Natural, Black or Crimson Red
- DCE1HR—Hand-rubbed satin finish in Natural only

DCE3

- Maple body, solid spruce top, mahogany neck
- Ebony fretboard and bridge
- Guild "Chesterfield" motif with pearl dot inlays
- Fishman® Prefix Pro™ System
- Blonde, Antique Burst and Tennessee Orange

DCE5

- Rosewood body, solid spruce top, mahogany neck
- Ebony fretboard and bridge
- Guild "Chesterfield" motif with pearl dot inlays
- Fishman® Onboard Blender™ System
- Nitrocellulose Lacquer Natural and Antique Burst



F47CE



F47MCE



F47RCE

Acoustic-Electrics

Grand concert-style acoustic-electrics are the newest addition to Guild's acoustic-electric stable. The emphasis here is on melodic power and tonal clarity. All of these models are 16 inches in body width, 25-5/8 inches in scale, 1-11/16 inch bone nuts. They all have mahogany necks with our classic "Chesterfield" motif and pearloid block inlays on rosewood fretboards. The F47 series was created with the fingerstyle artist in mind, but any style sounds great on this series of fine guitars.

F47CE / F47CEHR

- Solid mahogany back, laminated mahogany sides
- Solid spruce top with scalloped bracing
- Fishman® Onboard Blender™ System
- Lacquer Finishes Natural, Black, Antique Burst
- F47HR—Hand Rubbed satin finish, Natural only
- F47HR—Fishman® Prefix Pro™ System

F47MCE

- Solid flame maple back
- Laminated flame maple sides
- Solid spruce top with scalloped bracing
- Fishman® Onboard Blender™ System
- Lacquer finish in Blonde, Antique Burst or Black

F47RCE

- Solid rosewood back
- Laminated rosewood sides
- Solid spruce top with scalloped bracing
- Fishman® Onboard Blender™ System
- Lacquer finish in Natural or Antique Burst



"My Starfire has for several years now been an indispensable ally and become my #1 instrument. It has an utterly distinctive sound that is essential in my work with Beck and Air. The Starfire records beautifully and rocks out live, with no feedback and tons of personality. If you're looking for a timeless, warm, unique bass sound with amazing craftsmanship and playability, this is it. I can't recommend enough that you play one."

-Justin Meldal Johnsen

bassist with Beck, Air, and Tori Amos
www.beck.com
here with his Starfire II

Starfire™ II Bass



B30E



Guild Basses

The Guild Starfire Bass powered the bottom line of the late 60s music revolution. All over the airwaves and concert stages the Starfire Bass was an integral part of some of the most influential music of the era. Well styles changed and the short scale bass virtually disappeared, except in the studio. The rediscovery of this classic by a crop of current young artist as well as seasoned studio pros caused Guild to offer it once again in limited quantities. Availability is now limited to mahogany body models in Black or Transparent Red finishes. Guild's B30E acoustic bass is the standard by which all other's are judged. Guild made acoustic bass something that could be relied upon. The body is 6 3/8" deep 18" wide and the scale length is 30 1/2". Over the years electronics have become standard, the Fishman Matrix Professional® system is an integral part of the B30E.

Starfire™ II Bass

- Double cutaway thinline semi-hollow body
- Laminated mahogany back and sides
- Mahogany Neck
- 30 1/2-inch Scale Length
- Two Guild Humbucking bass pickups
- Guild Adjust-o-matic Bridge
- Black, and Red Transparent

B30E

- Large 18-inch wide and 6-inches deep body
- "AA" grade select spruce top
- Mahogany neck with rosewood fretboard
- 30 1/2-inch Scale Length
- Jumbo X Bracing
- Matrix Pro Pickup
- Rosewood Bridge
- Natural, and Antique Burst

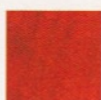
Colors not shown are: 21 Natural, 29 Claret Transparent, 33 Metallic Blue, 39 Ebony Transparent, 50 Opulent Brown



01 Blonde



06 Black



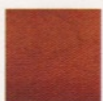
12 Tennessee Orange



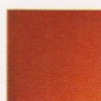
15 Chestnut



20 Amber



30 Cherry Sunburst



34 Autumn Burst



37 Antique Burst



38 Transparent Red



40 Fiesta Red



49 Sea Foam Green



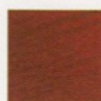
51 Natural Mahogany



52 Tobacco Burst



53 Gold Metallic



59 Black Cherry



60 Emerald Green Transparent



67 Honey Blonde



92 Cinnamon

Colors

Options

Guild has always catered to the individual musician, and that means offering options. All Guild acoustic models can be ordered from standard production with Fishman® AGP 125 and a Power Jack, or the Fishman AGP-2 System. Almost any other electronic option for acoustic guitar can be ordered from the Guild Custom Shop in Nashville.

Left-handed options are available at no extra charge on almost every guitar we make. The exceptions are where part suppliers or tooling requirements force us to pass along incremental cost increases. Consult your Guild Dealer or your retail price list. The following products are not currently available left-handed: Artist Award, Stuart, S4CE models, Crossroads and all Benedetto® brand guitars.

Any creative, structural, color or pickup option within reason will be considered by the Nashville Custom Shop. They are the only judge of "within reason," so consult your Guild Dealer or the Custom Shop for time and cost quotes on your dream guitar.

Every Guild guitar includes hardshell case with the following exceptions which are available with case at a nominal extra charge: all D4 variations and all DCE1 and DCE3 variations. Standard cases are three-ply, lined, flat-top vinyl covered wood cases with standard hardware. Deluxe cases are five-ply, plush-lined, arched, vinyl-covered wood cases with deluxe hardware. Custom Shop models, Artist Award, Stuart and 100 series acoustics come with Alligator-covered extra plush cases.



Everlast

www.everlastmusic.com

Guild Limited Lifetime Warranty

Because the folks at Guild are devoted to quality and the ideals of traditional craftsmanship, Guild warrants each of its instruments to be free from defects in materials and workmanship for as long as they are owned by the original retail purchaser. Terms subject to certain limitations and restrictions set forth in the Guild Owner's Manual.



"The Guild came out of the box playing great right away! It's marvelous to play and the intonation is really great. We play all over the place, and no matter what I'm doing, whether it's solo stuff or with the band - acoustically or plugged in - it's an excellent instrument."

-Taj Mahal

www.taj-mo-roots.com
with his X170 Manhattan