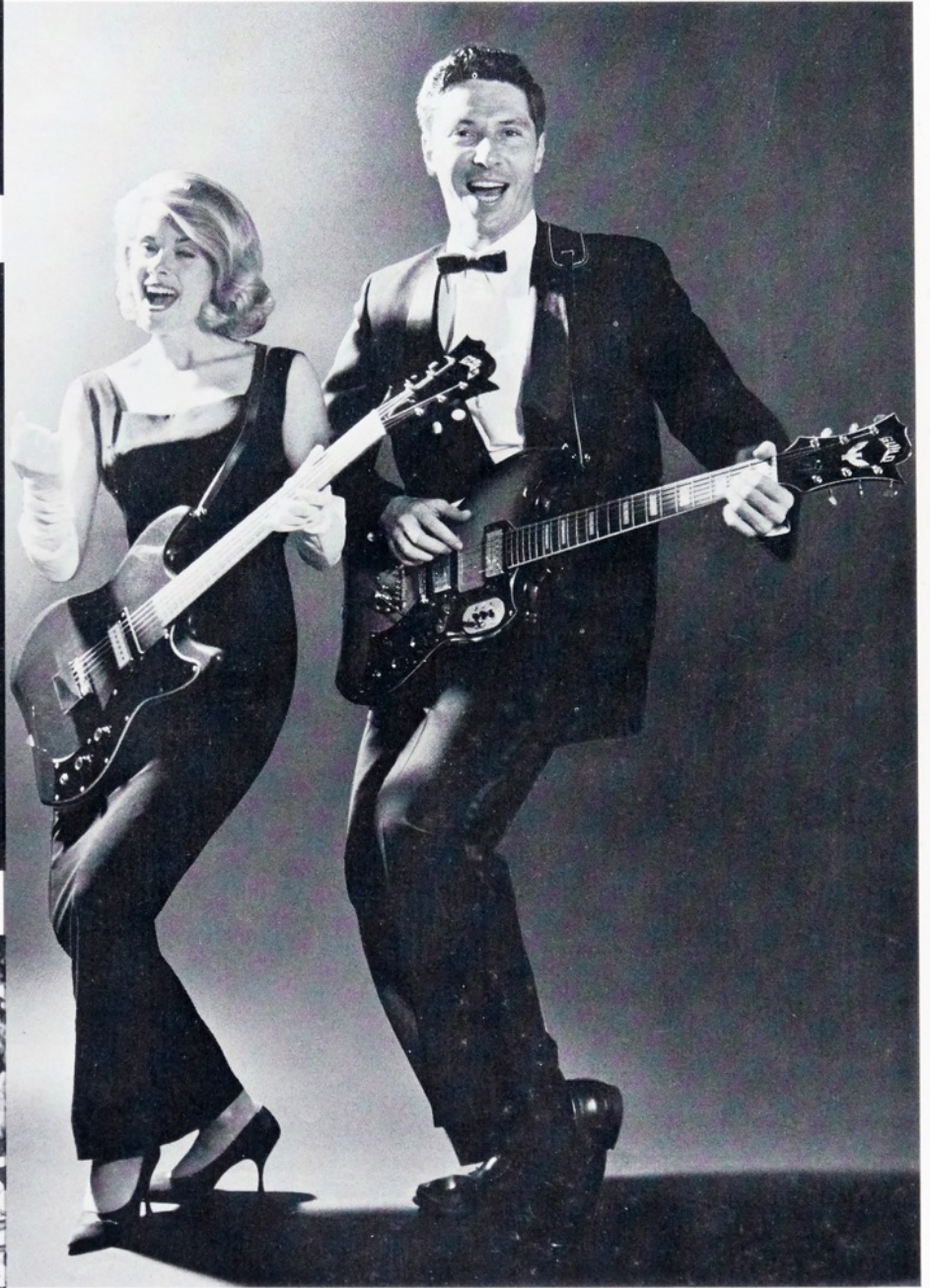


BARRY KORNFIELD



America's Finest!

MISSISSIPPI JOHN HURT



TWO MEMBERS OF THE WAGONMASTERS



1966 Catalog

Guild "STARFIRES"



SF-VI

SF-VI—SUPER STARFIRE DOUBLE CUTAWAY

■ Every luxury feature you've ever wanted in a thin-body electric guitar . . . plus the prestige that is yours with ownership of the finest in the Starfire series.

Model SF-VI has all the features of the SF-V, as well as an inlaid ebony fingerboard, mother-of-pearl position markers, bound f-holes with Mexican abalone inserts, gold-plated pick-ups, and gold-plated Guild Model Bigsby Vibrato Tailpiece. Double cutaway body.

Cherry-Red Starfire or Sunburst Finish

SF-XII—12-STRING STARFIRE DOUBLE CUTAWAY

■ Exciting electric on the folk-rock scene, Guild's SF-XII is built for the player who enjoys the challenging possibilities of the 12-string fingerboard. A rewarding instrument to play . . . an asset to every group that is seeking to develop its own brand of big-beat sound. Has 2 tone and 2 volume controls, toggle switch for pick-ups. Double cutaway body.

Cherry-Red Starfire or Sunburst Finish

SF-V—STARFIRE DELUXE DOUBLE CUTAWAY

■ The instrument to build your career on . . . the Starfire to give you full expression in the execution of today's demanding guitar parts. SF-V is a double pick-up model with 2 tone and 2 volume controls, toggle switch for pick-ups, master volume control and Guild Model Bigsby Vibrato Tailpiece. Double cutaway body, inlaid fingerboard and deluxe pegs.

Cherry-Red Starfire or Sunburst Finish

No. 4516—Hard Shell Case, 3 ply veneer, plush lined

No. 18-T—Arched Hard Top Case, flannel lined

Zipper Case Cover for Hard Shell Case

Padded Professional Gig Bag



SF-XII



SF-V

All Guild Starfires are available in Emerald Green, Ebony Grain or other special colors on special order.

■ FOR PUNCH AND DRIVE with swinging good looks, play one of these great-sounding guitars in the famous Guild Starfire series—the choice of rock 'n roll groups, jazzmen and country/western stars who require an instrument of utmost flexibility. Comfortable and easy-handling, Guild Starfires have an extra-thin body 16 $\frac{3}{8}$ " wide, 20 $\frac{1}{4}$ " long and 2" deep, bound with ivoroid. Guild's fast-action, slender Starfire necks are made of Peruvian mahogany and are reinforced by an adjustable steel neck rod. Fingerboards are of well-seasoned rosewood. Two Guild Anti-Hum Pick-Ups function on the humbucking principle. They are hypersensitive to the complete range of string vibrations while filtering out all hum and other interference. Guild's Adjusto-matic 6-Way Bridge assures correct string spacing and perfect intonation. The final touch of quality is a factory-fitted set of Guild EA-610 Strings.



Guild "STARFIRES"



SF-IV

SF-IV—STARFIRE ST'D DOUBLE CUTAWAY

■ Highly popular Starfire introduced because of the preference of many young guitarists for the graceful lines of the double cutaway body.

Model SF-IV has double pick-ups with 2 tone and 2 volume controls, and toggle switch for pick-ups.

Cherry-Red Starfire
Sunburst Finish



SF-III

SF-III—STARFIRE STANDARD

■ The original Starfire . . . a favorite for many years because it was specifically designed for the young artist with a flair for showmanship.

Single cutaway model with double pick-ups, 2 tone and 2 volume controls, toggle switch for pick-ups, and Guild Model Bigsby Vibrato Tailpiece.

Cherry-Red Starfire
Sunburst Finish

SF-II—STARFIRE STANDARD

■ Same as SF-III above, but without Guild Model Bigsby Vibrato Tailpiece.

No. 4516—Hard Shell Case,
3 ply veneer, plush lined

No. 18-T—Arched Hard Top Case,
flannel lined

Zipper Case Cover for Hard Shell Case
Padded Professional Gig Bag

Cherry-Red Starfire
Sunburst Finish



Starfire Bass

STARFIRE BASS

■ The acoustical advantages of a hollow body guitar in a double cutaway bass with famous Starfire features. Aided by the resonance of its arched top, this guitar propels your group with the tight, strong sound that keeps the other instruments rocking right along.

With a 30½" scale on its rosewood fingerboard, this bass has a long, slender Starfire neck made of Peruvian mahogany reinforced by an adjustable steel neck rod. Its extra-long ivoroid-bound body is 16¾" wide, 20¼" long and 2" deep.

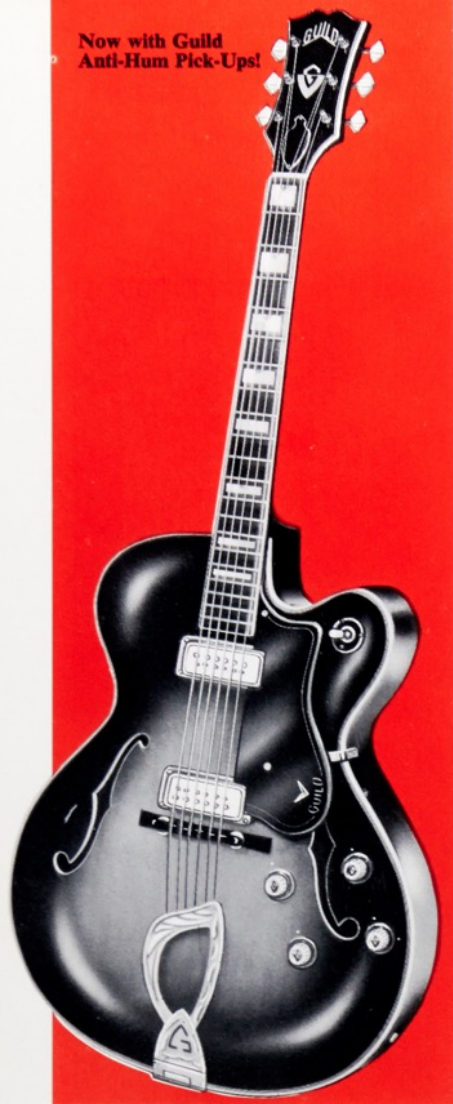
Guild's Anti-Hum Pick-Up was especially adapted for this instrument. Functioning on the humbucking principle, it is hypersensitive to the complete range of string vibrations while filtering out all hum and other interference. Other features include separate tone and volume controls, two hand rests, and of course fine quality strings.

Cherry-Red Starfire
Sunburst

Padded Professional Gig Bag



Now with Guild
Anti-Hum Pick-Ups!



STUART X-500

■ This is the ultimate in electric guitars... the pride of Guild's sound engineers and wood craftsmen. Its distinctive fast-action neck is fashioned of 5-piece selected hard maple and walnut, with adjustable steel neck rod. The imported ebony fingerboard is elegantly inlaid with 8 two-tone deluxe mother-of-pearl position markers.

The Stuart's cut-away body is 17" wide by 21" long by 3 1/8" deep. Sides and back are highly flamed choice curly maple. Top is select fine grain spruce. Top and back are edged with 8-ply binding. Neck and head plate are bound with ivoroid. Has 2 built-in deluxe individual magnet pick-ups—each with separate tone and volume control. Toggle switch permits instantaneous selection of either or both pick-ups. Individual string adjustment screws assure tonal balance in entire range. Gold-plated, hand engraved tailpiece and accessories. Deluxe gold-plated, pearl grip non-slip tuning pegs. Guild EA-610 Strings.

Sunburst Finish
Blonde Finish

No. 5217 DeLuxe Hard Shell Case,
3 ply veneer, plush lined

Zipper Case Cover for Hard Shell Case
Padded Professional Gig Bag

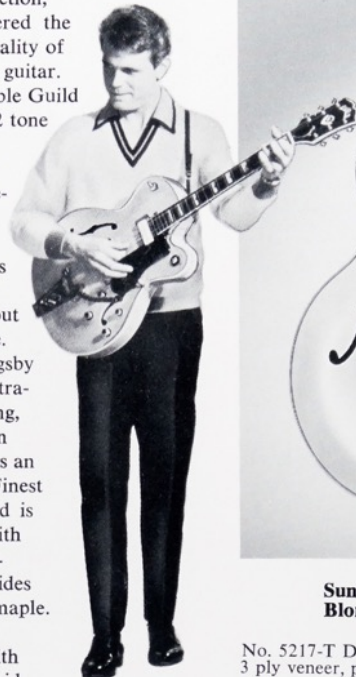
DUANE EDDY ROCK 'N ROLL GUITARS

DUANE EDDY DE-500 DELUXE

■ As designed and perfected by Guild for "twang" stylist Duane Eddy and used on the brilliantly exciting records that have made him famous. Since its introduction, jazzmen too have discovered the flexibility and live tonal quality of this ultra-responsive Guild guitar.

Equipped with 2 adjustable Guild Anti-Hum Pick-Ups, plus 2 tone and 2 volume controls, master volume control and toggle switch for pick-up selection. Engineered on the humbucking principle, Guild's Anti-Hum Pick-Ups are hypersensitive to every string vibration, yet filter out hum and other interference.

Has the Guild Model Bigsby Vibrato Tailpiece on an extra-thin body 17" wide, 21" long, 2" deep. Slender, fast-action 3-piece hard maple neck has an adjustable steel neck rod. Finest imported ebony fingerboard is ivoroid bound and inlaid with 8 two-tone genuine mother-of-pearl position blocks. Sides and back are choice curly maple. Top is select grain spruce. Top and back are bound with 5-ply black and white ivoroid. Guild EA-610 Strings.



Duane Eddy DE-500
All metal parts
heavily gold plated.



Sunburst Finish
Blonde Finish

No. 5217-T DeLuxe Hard Shell Case,
3 ply veneer, plush lined
Zipper-Case Cover for Hard Shell Case
Padded Professional Gig Bag

DUANE EDDY DE-400 STANDARD

■ A more moderately priced Duane Eddy guitar — approved for Duane's authentic "twang", other rock 'n roll effects — and all-around jazz use.

Equipped with 2 adjustable Guild Anti-Hum Pick-Ups, plus 2 tone and 2 volume controls, master volume control and toggle switch for pick-up selection. Engineered on the humbucking principle, Guild's Anti-Hum Pick-Ups are hypersensitive to every string vibration, yet filter out all hum and other interference.

Like the Duane Eddy DeLuxe, the Standard has the Guild Model Bigsby Vibrato Tailpiece. Sides and back of this guitar are of select maple. Top is of finest spruce. Ivoroid-bound body is 17" wide by 21" long by 2" deep. Has a fast-action neck of 3-piece Honduras mahogany with an adjustable neck rod. Imported rosewood ivoroid-bound fingerboard has 8 large position markers. Heavily nickel plated individual non-slip pegs and accessories. Factory-fitted with Guild EA-610 Strings.

Sunburst Finish
Blonde Finish

No. 5217-T DeLuxe Hard Shell Case,
3 ply veneer, plush lined

Zipper Case Cover for Hard Shell Case
Padded Professional Gig Bag

Duane Eddy DE-400
Chrome and nickel-
plated metal parts.



Guild

DOUBLE PICK-UP ELECTRICS



Now with Guild
Anti-Hum Pick-Ups!



MANHATTAN X-175

■ A strikingly beautiful and musically perfect Guild Guitar . . . an outstanding example of professional tone quality, responsiveness and versatility. Equipped with 2 built-in Guild "Frequency Tested" pick-ups, perfectly balanced and aligned. Has separate tone and volume controls for each pick-up, with a toggle switch for instantaneous selection of either or both. Individual string adjustment screws provide perfect tonal balance.

Sides and back are of select maple. Top is finest spruce. Ivoroid-bound body is 17" wide by 21" long by 3 3/8" deep. Has a fast-action neck of 3-piece Honduras mahogany and an adjustable neck rod. Imported rosewood ivoroid-bound fingerboard has 8 large position markers and popular professional scale. Heavily nickel-plated deluxe tailpiece, individual non-slip pegs and accessories. Factory-fitted with Guild EA-610 Strings.

Sunburst Finish
Blonde Finish

No. 5217 DeLuxe Hard Shell Case, 3 ply veneer, plush lined

No. 19 Arched Hard Top Case, flannel lined

CAPRI CE-100D

■ Dramatic performance in a highly versatile guitar—with rich, professional tone quality and excellence of workmanship at a moderate price. This Old World style cut-away guitar has an ivoroid-bound maple body in medium-full size: 16 3/8" wide by 20 1/4" long by 2 7/8" deep. Its gracefully designed body makes this instrument easy to hold and to play.

Has fast-action 3-ply mahogany neck with adjustable steel neck rod. Imported rosewood fingerboard is inlaid with pearloid position blocks and bound in ivoroid.

Equipped with 2 built-in Guild "Frequency-Tested" pick-ups, with 2 tone controls and 2 volume controls, toggle switch for pick-up selection, and individual string adjustment screws. This guitar has nickel-plated non-slip pegs, a luxurious tailpiece, and the finest quality Guild EA-610 Strings.

Sunburst Finish
Blonde Finish

No. 4516 Hard Shell Case, 3 ply veneer, plush lined

No. 18 Arched Hard Top Case, flannel lined

SLIM JIM T-100D

■ The jazz guitarist's favorite in this price range! Light in weight and easy to handle . . . an electric guitar built for the player who prefers the advantages of a slim instrument with a noteworthy range of performance. Extra-thin ivoroid-bound body is 16 3/8" wide, 20 1/4" long, 2" deep. This instrument spells "showmanship" in every feature.

Has a slender, fast-action Honduras mahogany neck, reinforced by Guild's adjustable steel neck rod. Rosewood fingerboard is inlaid with pearl position markers.

Equipped with 2 built-in Guild "Frequency Tested" pick-ups, with 2 tone controls and 2 volume controls, toggle switch for pick-up selection, and individual string adjustment screws. Has the Guild deluxe tailpiece . . . and, for a final touch of quality, a set of factory-fitted Guild EA-610 Strings.

Sunburst Finish
Blonde Finish

No. 4516 Hard Shell Case, 3 ply veneer, plush lined

No. 18-T Arched Hard Top Case, flannel lined

Guild

SINGLE PICK-UP ELECTRICS



CAPRI CE-100

■ Rich, professional tone quality and excellence of workmanship at a moderate price. This Old World style cut-away guitar has an ivoroid-bound maple body in medium-full size: 16 $\frac{3}{8}$ " wide by 20 $\frac{1}{4}$ " long by 2 $\frac{7}{8}$ " deep. Its gracefully designed body makes this instrument easy to hold and to play.

Has fast-action 3-ply mahogany neck with adjustable steel neck rod. Imported rosewood fingerboard is inlaid with pearloid position blocks and bound in ivoroid.

Single Guild built-in "Frequency Tested" pick-up has separate tone and volume controls, plus individual string adjustment screws. This guitar is equipped with nickel-plated non-slip pegs, luxurious tailpiece, and fine Guild Strings.

**Sunburst Finish
Blonde Finish**

No. 4516 Hard Shell Case, 3 ply veneer, plush lined

No. 18 Arched Hard Top Case, flannel lined



SLIM JIM T-100

■ Light in weight and easy to handle . . . a guitar built for the player who prefers the advantages of a slim instrument with a noteworthy range of performance. Extra-thin ivoroid-bound body is 16 $\frac{3}{8}$ " wide, 20 $\frac{1}{4}$ " long, 2" deep. An unusual combination of styling, response and sound!

Has a slender, fast-action Honduras mahogany neck, reinforced by Guild's adjustable steel neck rod. Rosewood fingerboard is inlaid with pearl position markers.

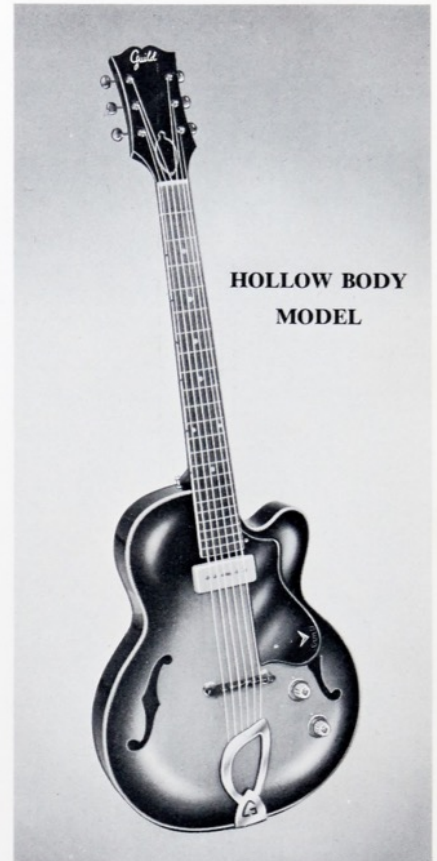
Equipped with single built-in Guild "Frequency Tested" pick-up, with separate tone and volume controls, plus individual string adjustment screws. The final touch of quality is, of course, a set of factory-fitted Guild Strings.

**Sunburst Finish
Blonde Finish**

No. 4516 Hard Shell Case, 3 ply veneer, plush lined

No. 3716 Hard Shell Case, 3 ply veneer, flannel lined

No. 18-T Arched Hard Top Case, flannel lined



**HOLLOW BODY
MODEL**

FRESHMAN M-65

■ This Freshman model has the professional 24 $\frac{3}{4}$ " scale, with the hollow body construction that makes possible exceptional resonance in a guitar of its small size and light weight. Body size is only 13 $\frac{1}{2}$ " wide by 17 $\frac{1}{4}$ " long by 2" deep. The instrument weighs only 5 lbs.

Fast-action mahogany neck has adjustable neck rod, ivoroid-bound rosewood fingerboard and pearl position markers. Back and sides are of imported mahogany. Maple top is bound with white ivoroid. Has built-in Guild "Frequency Tested" pick-up with separate tone and volume controls. Individual string adjustment screws assure tonal balance throughout. Luxurious nickel-plated tailpiece and accessories. Guild Strings.

**Sunburst Finish
Natural Blonde Top
Cherry-Red**

No. 42-P Hard Shell Case, 3 ply veneer, plush lined

No. 17 Arched Hard Top Case, flannel lined

Guild

SINGLE PICK-UP ELECTRICS

SOLID BODY ELECTRICS



**HOLLOW BODY
MODEL WITH
SHORT SCALE**

FRESHMAN M-65-3/4

■ A hollow body student model with a special, short 22 $\frac{3}{4}$ " scale having 19 frets . . . the fastest guitar neck of all! Weighs only 4 $\frac{3}{4}$ lbs. Body size is a compact 13 $\frac{1}{2}$ " wide by 17 $\frac{1}{4}$ " long by 2" deep. Easy to hold . . . a pleasure to play! The hollow body contributes great resonance.

Fast-action mahogany neck with adjustable steel neck rod, rosewood fingerboard and pearl position markers. Back and sides of selected Honduras mahogany. Maple top bound with white ivoryoid.

New built-in Guild Super-Sensitive pick-up has individual tone and volume controls. Luxurious nickel-plated tailpiece and accessories. Fitted with Guild Strings.

**Sunburst Finish
Natural Blonde Top
Cherry-Red**

No. 42-P Hard Shell Case, 3 ply veneer, plush lined

No. 17 Arched Hard Top Case, flannel lined



CORDOBA X-50 CORDOBA T-50 "SLIM"

■ Two models engineered to the needs of advanced students. Body size of Model X-50 is 16 $\frac{3}{8}$ " wide, 20 $\frac{1}{4}$ " long, 2 $\frac{7}{8}$ " deep. Body of Model T-50 "Slim" is only 2" deep.

Both models have special Guild fast-action Honduras mahogany neck and adjustable steel neck rod, rosewood fingerboard with pearl position markers, short-action professional scale. Single built-in Guild "Frequency-Tested" pick-up has individual adjustment screws and separate tone and volume controls. Both models have nickel-plated non-slip pegs and accessories, plus Guild Strings.

CORDOBA X-50

**Sunburst Finish
Blonde Finish**

CORDOBA T-50 "SLIM"

**Sunburst Finish
Blonde Finish**

No. 3716 Hard Shell Case, 3 ply veneer, flannel lined

No. 18-T Arched Hard Top Case, flannel lined

No. K-11 Economy Kivarboard Case



JET-STAR BASS

■ A solid body bass inspired by the lines of the Guild Thunderbird (see following page). Comfortable to hold, easy to control, as responsive as a lead guitar.

Body is 13 $\frac{1}{4}$ " wide, 19 $\frac{1}{4}$ " long, 1 $\frac{1}{16}$ " deep. Has a specially designed bass neck reinforced by an adjustable steel rod. Lightning-action rosewood fingerboard has a 30 $\frac{1}{2}$ " scale and 10 inlaid position dots.

Equipped with Guild's Anti-Hum Pick-Up adapted especially for bass. Functioning on the humbucking principle, it is hypersensitive to the complete range of string vibrations while filtering out all hum and other interference. Has separate tone and volume controls, two hand rests, and fine quality strings.

**Cherry-Red "Starfire"
Sunburst Finish**

Padded Professional Gig Bag

Guild

**SOLID
BODY
ELECTRICS**

POLARA S-100

■ For the modern technician, a luxurious solid body guitar that contributes color and sparkle to every performance, while blending easily with other instruments.

Hand sculptured for comfort, this graceful Guild is 13 $\frac{1}{4}$ " wide, 17 $\frac{3}{4}$ " long, and only 1 $\frac{9}{16}$ " deep. Has the famous Guild fast-action neck, 24 $\frac{3}{4}$ " scale, and 22 frets.

Equipped with 2 Guild "Frequency-Tested" pickups with 2 tone and 2 volume controls, plus toggle switch for pick-up selection.

At no extra cost, offers the convenience of the Guild Built-In Guitar Stand, which holds the instrument securely in ready-to-use position.

Has Guild Adjusto-Matic 6-Way Bridge, specially engineered vibrato tailpiece, and input jack. Factory-fitted with Guild EA-610 Strings.

Cherry-Red "Starfire" Sunburst Finish

No. 4519 Hard Shell Case, 3 ply veneer, plush lined

No. 15-S Economy Case, deluxe covering, crushed plush lined

Padded Professional Gig Bag



Built-In
Guitar Stand

Polara S-100



Jet-Star S-50

JET-STAR S-50

■ Guild quality from top to bottom . . . in an impressive solid body that identifies its owner as a musician who has equipped himself with an instrument of prestige.

Pleasingly contoured body is designed for comfort and ease of handling, is 13 $\frac{1}{4}$ " wide, 17 $\frac{3}{4}$ " long, only 1 $\frac{9}{16}$ " deep. Has the famous Guild fast-action neck with 24 $\frac{3}{4}$ " scale and 22 frets.

This instrument has a single built-in Guild "Frequency-Tested" pick-up with individual adjustment screws and separate tone and volume controls. Distinctive new Guild integral tailpiece-bridge combination, with swing-off cover, is adjustable for height, tension and intonation.

This easy-action solid body guitar is highly recommended by teachers for student and other amateur use. Factory-fitted with Guild Strings.

Cherry Red "Starfire"

No. 15-S Economy Case, deluxe covering, crushed plush lined

Padded Professional Gig Bag

Emerald Green, Honey Amber, Ebony Grain and White on Special Order



Built-In
Guitar Stand

Thunderbird S-200

THUNDERBIRD S-200

■ Powerfully exciting! An instrument for the hard-driving guitarist who searches continually for new horizons of sound.

This beautifully balanced, comfortably contoured solid body electric is 13 $\frac{1}{4}$ " wide, 19 $\frac{1}{4}$ " long, and only 1 $\frac{9}{16}$ " deep. Has Guild's lightning-action neck with deluxe bound fingerboard having 8 inlaid position blocks. Scale is 24 $\frac{3}{4}$ ", with 22 frets.

Equipped with 2 adjustable Guild Anti-Hum Pick-Ups with 2 tone and 2 volume controls, plus solo/rhythm selector switch, solo tone modifying switch and 2 off-on pick-up switches. Engineered on the humbucking principle, Guild's Anti-Hum Pick-Ups are hypersensitive to every string vibration, yet filter out all hum and other interference.

At no extra cost, offers the convenience of the Guild Built-In Guitar Stand, which holds the instrument securely in ready-to-use-position.

Has Guild Adjusto-Matic 6-Way Bridge, specially engineered vibrato tailpiece, and input jack. Factory-fitted with Guild EA-610 Strings.

Cherry-Red "Starfire" Sunburst Finish

No. 4519 Hard Shell Case, 3 ply veneer, plush lined

No. 15-S Economy Case, deluxe covering, crushed plush lined

Padded Professional Gig Bag

Guild

GEORGE BARNES MODELS



GEORGE BARNES GUITAR IN "F" PATENT PENDING

■ An all-new concept in tuning and pick-up placement, as conceived by George Barnes for use in his 10-man guitar section when recording his exciting albums. The Guitar in "F" is strung from "A" to "A", four notes higher than a standard guitar, and tuned A-E-C-G-D-A. Mr. Barnes uses the Guitar in "F" in ensemble as he would an alto saxophone—usually two or more to the section.

To permit unhampered vibration, the instrument is built with a carved top like that of the traditional acoustic guitar, but without f-holes. Its pick-ups, "floating" above the carved top, are secured to a precision-fitted internal brace-bar which runs longitudinally through the guitar. These innovations completely eliminate undesirable harmonics or feed-back.

The instrument is fitted with 2 adjustable Guild Anti-Hum Pick-Ups with 2 tone and 2 volume controls, plus toggle switch for pick-up selection. Engineered on the humbucking principle, Guild's Anti-Hum Pick-Ups are hypersensitive to every string vibration, yet filter out all hum and other interference.

This guitar has the short 22 $\frac{3}{4}$ " scale with 20 frets. Its mahogany neck, with adjustable steel neck rod, rosewood fingerboard and pearl position markers, is the fastest ever built. Body size is a compact 13 $\frac{1}{2}$ " wide by 17 $\frac{1}{4}$ " long by 2 $\frac{7}{8}$ " deep. Back and sides are of selected Honduras mahogany. Carved spruce top is bound with 3-ply white ivoroid, as is the back. Factory-fitted with Guild Strings.

Sunburst Finish
Cherry-Red Sunburst Finish

No. 42-GB Hard Shell Case, 3 ply veneer, plush lined

Padded Professional Gig Bag



George Barnes
Guitar in "F"



George Barnes Guitar in "F"



George Barnes Acousti-Lectric Model

George Barnes

GEORGE BARNES ACOUSTI-LECTRIC MODEL PATENT PENDING

■ A completely revolutionary idea! A fine electric guitar and an artist quality rhythm guitar all in one instrument—with a freely vibrating acoustic top that eliminates feed-back! Designed by George Barnes for himself and other recording players desirous of carrying only one guitar without sacrificing musical quality.

Strung as a standard guitar, the George Barnes Acousti-Lectric® has the full size 17" by 21" body and is 3 $\frac{1}{8}$ " deep for more powerful rhythm projection, but construction is otherwise similar to the George Barnes Guitar in "F"

To permit unhampered vibration, the instrument is built with a carved spruce top like that of the traditional acoustic guitar, but without f-holes. Its pick-ups, "floating" above the carved top, are secured to a precision-fitted internal brace-bar which runs longitudinally through the guitar. These innovations completely eliminate undesirable harmonics or feed-back.

The instrument is fitted with 2 adjustable Guild Anti-Hum Pick-Ups with 2 tone and 2 volume controls, plus toggle switch for pick-up selection. Engineered on the humbucking principle, Guild's Anti-Hum Pick-Ups are hypersensitive to every string vibration, yet filter out all hum and other interference.

This guitar has Guild's fast-action 3-piece hard maple neck with adjustable steel neck rod. Ivoroid bound fingerboard is of finest ebony, with 8 mother-of-pearl position markers. Back and sides are of highly figured curly maple, bound with 5-ply black and white ivoroid. Top is finest selected carved spruce. Factory-fitted with Guild EA-610 Strings.

Sunburst Finish
Blonde Finish

No. 5217 De Luxe Hard Shell Case, 3 ply veneer, plush lined

Zipper Case Cover for Hard Shell Cases
Padded Professional Gig Bag,

Guild

**ACOUSTIC
GUITARS**



ARTIST AWARD MODEL

■ Acoustic versatility in a class all its own! Besides its exquisite styling, the major feature of this unique guitar is its Guild-developed single control pick-up assembly. This gives the instrument complete electric as well as acoustic versatility—as preferred by many jazz guitarists.

Has a hand carved, solid select spruce top and a hand carved beautifully flamed curly maple back. Size of the cut-away body is 17" wide by 21" long by 3 1/8" deep. It is luxuriously bound at the top and back with 8-ply ivoroid. Fast-action neck is 5-piece hard maple and walnut, with adjustable steel neck rod. Imported ebony fingerboard is inlaid with 8 two-tone deluxe mother-of-pearl position markers. Headplate is elegantly inlaid with mother-of-pearl and Mexican abalone, in the form of a distinctive Artist Award Model plaque. Both headplate and fingerboard are bound with black and white ivoroid. Has hand engraved gold-plated tailpiece, luxurious gold-plated non-slip pegs, and finest Guild Strings.

**Sunburst Finish
Blonde Finish**

No. 5217 De Luxe Hard Shell Case,
3 ply veneer, plush lined

Zipper Case Cover for Hard Shell Cases
Padded Professional Gig Bag



STUART A-500

■ The perfect solo and rhythm instrument! The Stuart is unbelievably rich in tone, depth and resonance—the result of combining choice materials with superb Guild craftsmanship.

Made with hand carved select spruce top. Back and sides are highly flamed curly maple. Body size is 17" wide by 21" long by 3 1/8" deep. Top and back are bound with 8-ply ivoroid, as are headplate, neck and f-holes.

Fast-action 5-piece selected maple and walnut neck has adjustable steel neck rod. Ebony fingerboard is inlaid with two-tone genuine mother-of-pearl position markers and is bound with ivoroid.

Magnificently adorned with gold-plated, hand engraved tailpiece and accessories. Deluxe gold-plated, pearl grip non-slip tuning pegs. Strung with finest quality Guild Strings.

**Sunburst Finish
Blonde Finish**

No. 5217 De Luxe Hard Shell Case,
3 ply veneer, plush lined

Zipper Case Cover for Hard Shell Cases
Padded Professional Gig Bag



STRATFORD A-350

■ Day in and day out, the professional can depend upon this guitar for inspiring performance under the most exacting musical directors and arrangers.

The Stratford's vitality is impressive, its full-bodied sound blending in the flawless manner that pleases the critical ear.

Has a hand carved Sitka spruce top. Sides and back are curly maple. Body size is 17" wide by 21" long by 3 1/8" deep. Body, f-holes and neck are luxuriously bound in ivoroid.

Three-piece maple neck has adjustable steel neck rod. Imported ebony fingerboard is inlaid with mother-of-pearl position markers. Has gold-plated tailpiece, non-slip pegs and accessories. Supplied with finest quality Guild Strings.

**Sunburst Finish
Blonde Finish**

No. 5217 De Luxe Hard Shell Case,
3 ply veneer, plush lined

Zipper Case Cover for Hard Shell Cases
Padded Professional Gig Bag

CUSTOM ELECTRIFICATION OF ACOUSTIC GUITARS:

Guild

ACOUSTIC GUITARS



SAVOY A-150

■ A wonderfully free-playing orchestra guitar, especially suited to the musician who seeks the perfect blend with strings and instruments of the rhythm section. Beautifully constructed by Guild's master artisans of the finest materials available, with special attention to choicest woods. A superb acoustic!

Body size 17" wide by 21" long by 3 $\frac{1}{8}$ " deep. Two-tone ivoroid binding. Fast-action 3-piece Honduras mahogany neck with adjustable steel rod. Imported rosewood fingerboard with 8 pearloid position markers and ivoroid binding. Hand carved Sitka spruce top. Hard maple sides and back. Nickel-plated non-slip pegs and accessories. Factory-fitted with finest Guild Strings.

**Sunburst Finish
Blonde Finish**

No. 5217 DeLux Hard Shell Case, 3 ply veneer, plush lined

No. 19 Arched Hard Top Case, flannel lined



CAPRI CA-100

■ At any tempo, in any musical mood, the CA-100 produces the easy, relaxed, natural sound for which every guitarist strives. The pure guitar tone of this Old World acoustic cut-away, plus its handsome appearance, makes it the ideal choice of the modern orchestra guitarist.

Has beautifully hand carved Sitka spruce top and maple back and sides. Bound in black and white ivoroid. Body size 16 $\frac{3}{8}$ " wide by 20 $\frac{1}{4}$ " long by 2 $\frac{7}{8}$ " deep. Three-piece mahogany neck with adjustable steel rod. Imported rosewood fingerboard inlaid with pearloid position markers and bound in ivoroid. Nickel-plated non-slip pegs and accessories. Expertly factory-fitted Guild Strings.

**Sunburst Finish
Blonde Finish**

No. 4516 Hard Shell Case, 3 ply veneer, plush lined

No. 18 Arched Hard Top Case, flannel lined



CORDOBA A-50

■ A low-priced acoustic Guild, designed for the advanced student or for the professional who requires an extra instrument for practice or doubling. Has the "feel" of the more expensive Guild models because it's perfectly proportioned to give the player more enjoyment with less effort. Outstanding value in a genuine Guild . . . a guitar that will give its owner many years of faithful service.

Has a gracefully arched maple top and back. Ivoroid bound body is 16 $\frac{3}{8}$ " wide by 20 $\frac{1}{4}$ " long by 2 $\frac{7}{8}$ " deep. Fast-action Honduras mahogany neck with adjustable steel rod. Choice rosewood fingerboard with pearl position markers. Nickel-plated non-slip pegs and accessories. Factory-fitted with fine quality Guild Strings.

**Sunburst Finish
Blonde Finish**

No. 3716 Hard Shell Case, 3 ply veneer, flannel lined

No. 18 Arched Hard Top Case, flannel lined

No. K-11 Economy Kivarboard Case

Any Guild acoustic guitar may be ordered with the Guild-developed single pick-up assembly, with components similar to that on the Guild Artist Award Model Guitar. This permits playing of the instrument both as an acoustic and electric guitar.

Carolyn Hester,
Columbia Records
Folk Artist, with
Guild Bluegrass F-47.

Guild

FLAT-TOP GUITARS



BLUEGRASS F-47

(LEFT)

■ For the bluegrass folk singer, a guitar of haunting tonal beauty, with the lusty resonance that characterizes the musical vigor of this specialized art form.

Beautifully proportioned body is 16" wide by 20" long by 4 $\frac{7}{8}$ " deep. Back and sides are of choice Honduras mahogany. Top is of natural blonde fine grain spruce. Back and top are bound with ivoroid.

3-piece mahogany neck with adjustable steel rod. Ivoroid-bound rosewood fingerboard, inlaid with 8 pearloid position markers. Inlaid headpiece. Deluxe nickelplated pearl grip non-slip pegs. Finest quality Guild Strings.

Natural Spruce Top

No. 4516-D Hard Shell Case, 3 ply veneer, plush lined

No. 18-D Arched Hard Top Case, flannel lined



Navarre F-50

BLUEGRASS JUBILEE D-40

■ Guild's improved version of the popular "dreadnaught" guitar — with a pure, robust tone to add dimension to every performance. This is a 41 $\frac{1}{2}$ " guitar with a 25 $\frac{1}{2}$ " scale. Body is 15 $\frac{3}{4}$ " wide, 20" long and 5" deep. Fingerboard is 1 $\frac{3}{4}$ " at the nut and 2 $\frac{1}{4}$ " where it joins the body.

Has Guild's fast-action 3-piece mahogany neck with adjustable steel rod, rosewood fingerboard and 8 pearloid position markers. Artistically inlaid headpiece. Deluxe nickel-plated non-slip pegs. Finest Guild Strings.

Natural Spruce Top with Mahogany Back and Sides

■

BLUEGRASS SPECIAL D-50

■ The perfect guitar for the bluegrass instrumentalist, because it combines outstanding clarity of tone with great depth and balance. Its impressive beauty equals its distinctive performance.

Similar to Model D-40 illustrated at the left and described above, but with rosewood back and sides, ebony fingerboard, and deluxe chromed Grover Rotomatic tuning machines.

Natural Spruce Top with Rosewood Back and Sides

No. 4520 Hard Shell Case, 3 ply veneer, plush lined

No. K-14 Economy Kivarboard Case

NAVARRE F-50

■ An example of traditional guitar craftsmanship in its finest form . . . a revelation in pure, rich guitar tone. Jumbo size body, 17" wide by 21" long by 4 $\frac{1}{2}$ " deep, has fine grain spruce top, with sides and back of choice curly maple.

Exquisite ivoroid binding around body, double ivoroid circles around sound hole, black and white ivoroid along fingerboard. Fast-action hard maple and walnut neck with adjustable steel rod. Imported ebony fingerboard inlaid with 2-tone genuine mother-of-pearl position markers. Gold-plated non-slip tuning pegs. Finest Guild Strings.

Sunburst Finish Blonde Finish

NAVARRE F-50-R

■ Tone and workmanship of fantastic quality, to make this an exceptional flat-top for the folk artist. Similar to Model F-50, but with rosewood back and sides.

Natural Spruce Top with Rosewood Back and Sides

No. 5217 DeLuxe Hard Shell Case, 3 ply veneer, plush lined



Bluegrass Jubilee D-40

Guild

FLAT-TOP GUITARS



Aragon F-30

ARAGON F-30

■ One of the most widely used Guild folk guitars... chosen by many professionals because of its perfect body proportions, its magnificent tone projection, and its understated good looks. The F-30 with Natural Blonde Top is the Guild played by Mississippi John Hurt (see catalog cover).

The handsome ivoroid-bound body of the F-30 is 15 $\frac{1}{8}$ " wide by 19 $\frac{1}{2}$ " long by 4 $\frac{1}{4}$ " deep, with black and white inlay around the sound hole. Close grain spruce top with Peruvian mahogany sides and back, fast-action mahogany neck with adjustable steel rod, and fingerboard of imported rosewood. Pearl position markers, richly inlaid headpiece, nickel-plated non-slip pegs. Factory-fitted with Guild Strings.

Sunburst Finish
Natural Blonde Top

No. 3715 Hard Shell Case, 3 ply veneer, flannel lined

No. K-10 Economy Kivarboard Case

12-STRING F-212

■ 12-string tuning is popular with folk singers and accompanists because of the full sound it achieves. The 1st, 2nd and 3rd double strings are tuned in unison; the 4th, 5th and 6th double strings are tuned in octaves.

Body size of this model is 16" wide by 20" long by 4 $\frac{7}{8}$ " deep. Back and sides are of choice mahogany. Finest spruce top. Back and top are bound with ivoroid.

Has Guild's fast-action 3-piece mahogany neck with adjustable steel rod. The fingerboard of this fine guitar is made of imported rosewood, inlaid with 8 pearl position markers. Beautifully inlaid headpiece. Nickel-plated non-slip pegs and Guild Strings.

Spruce Top, Mahogany Back and Sides

12-STRING ARTIST F-312

■ This superbly crafted 12-string guitar has rosewood back and sides... a Guild masterpiece in every detail!

Spruce Top, Rosewood Back and Sides

No. 4516-D Hard Shell Case, 3 ply veneer, plush lined

No. 18-D Arched Hard Top Case, flannel lined



12-String F-212

TROUBADOUR F-20

■ This lowest-price Guild offers most unusual value. Over the years it has become a favorite instrument among folk singers and folk guitarists, because of its fine tone and the convenience of its size.

Concert size body is 13 $\frac{3}{4}$ " wide by 18" long by 4 $\frac{1}{4}$ " deep, with selected spruce top, ivoroid binding, and 2-tone inlay around sound hole.

The F-20 has a fast-action Peruvian mahogany neck with adjustable steel rod, select rosewood fingerboard with pearl position markers, and bridge of imported rosewood. Has non-slip tuning pegs and is factory-fitted with Guild Strings. (Illustrated with Natural Blonde Top.)

Sunburst Finish
Natural Blonde Top

No. 3714 Hard Shell Case, 3 ply veneer, flannel lined

No. K-9 Economy Kivarboard Case



Troubadour F-20

Guild

CLASSIC GUITARS

GUILD CLASSIC GUITAR SPECIFICATIONS

■ Conforming to tradition, the body size of all Guild Classic Guitars is 14½" wide, 19⅞" long and 3½" deep. The neck joins the body at the 12th fret. The scale is 25½" long.



CLASSIC MARK III



CHARLIE BYRD PLAYS
GUILD CLASSIC MARK VI



CLASSIC MARK IV

CLASSIC MARK I

■ Fan bracing, 3-piece mahogany neck, full width rosewood fingerboard. Headplate overlaid with rosewood. Rosewood bridge. Soundhole inlaid with red, white and black mosaic of Mexican motif. Honduras mahogany body. Non-slip nickel plated machines with aluminum rollers. Guild Nylon Strings.

All Mahogany

CLASSIC MARK II

■ Fan-braced spruce top, Honduras mahogany body, 3-piece mahogany neck, classic width rosewood fingerboard. Rosewood headplate and bridge. Soundhole has mosaic inlay in red, white and black Mexican motif. Body bound with 3-ply shell. Non-slip nickel plated machines with aluminum rollers. Guild Nylon Strings.

Spruce Top, Mahogany Back/Sides

CLASSIC MARK III

■ Fan-braced Sitka spruce top, Peruvian mahogany sides and back. 3-piece mahogany neck overlaid with Brazilian rosewood fingerboard. Rosewood headplate and bridge. Soundhole has mosaic inlay in Mexican floral motif in four bright colors. Body bound with 3-ply shell. Non-slip nickel plated machines with aluminum rollers. Guild Nylon Strings.

Spruce Top, Mahogany Back/Sides



■ The Guild Classic Guitars Brochure illustrates and fully describes all six instruments on this page. Your copy on request.

CASES FOR ALL CLASSIC MODELS

No. C-15 DeLuxe Hard Shell Case, plush lined

No. C-12 DeLuxe Soft Shell Case, plush lined

No. K-9 Economy Kivarboard Case

CLASSIC MARK IV

■ Fan-braced aged Sitka spruce top, flamed pearwood 2-piece back and sides. 3-piece Peruvian mahogany neck overlaid with ebony fingerboard and headplate. Ebony bridge. Soundhole decorated with mosaic inlay of multi-color geometric design. Body bound with 4-ply shell. Gold-etched machines with large bone rollers. Guild Nylon Strings.

Spruce Top, Flamed Pearwood
Back/Sides

CLASSIC MARK V

■ Aged Sitka spruce top is fan-braced in special pattern. Choice of Brazilian rosewood or imported flamed maple 2-piece back and sides, both in natural finish. Hand-carved 3-piece neck with ebony fingerboard. Handmade ebony bridge. Soundhole has extra-large Spanish mosaic inlay. Body is bound completely with ebony. Gold-etched machines with large bone rollers. Guild Nylon Strings.

Spruce Top, Rosewood Back/Sides
Spruce Top, Flamed Maple Back/Sides

CLASSIC MARK VI

■ A custom instrument. Hand-carved 3-piece neck. Ebony fingerboard and bridge. Body bound completely with natural wood. Gold-etched machines with large bone rollers. Guild Nylon Strings.

On Special Order Only
Spruce Top, Rosewood Back/Sides

Guild COPICAT

FOR ECHO / MULTI-REPEAT / REVERB

MODEL E-4 CUSTOM COPICAT

■ The only device of its kind made in England, the Copicat is widely employed in the U.S.A. by groups seeking to adapt the Liverpool and other English sounds. Copicat provides 7 basically different effects, but many variations are possible with ingenious application. Surprising results can be achieved with combinations of halo, echo and repeat. (The reverb control can vary the number of repeats from one to 20.) Many vocal tricks and sound effects, such as surf pounding the shore, can be achieved with this unique device.

Copicat is a hi-efficiency accessory priced within the reach of the average instrumentalist and vocal student. During operation, a tape loop repeats individual notes or several in series for multi-instrument effects, with optional swell and reverb. Copicat has 4 recording heads; separate swell and reverb controls; 2 input jacks, each with its own volume control; separate "halo", "echo" and "repeat" push buttons. Off-on motor switch, pilot light and fuse. Handsome fabric-covered cabinet with handle. Size only 14¾ inches by 10 inches by 5¼ inches. AC operation. Complete with remote control foot switch and plastic cover. (Guitar not included.)



COPICAT REPLACEMENT TAPES

Copicat is a dual track unit. It uses only half the tape at one time. Tape may be turned upside down for additional use.

No. AG-5 Endless, unspliced Mylar tape for Copicat. Guaranteed not to break. Guaranteed useful life, one million passes. Packed 5 tapes to the box.

No. T-3 Spliced tape for Copicat. Useful life about one week with average use. Packed one dozen to the box.



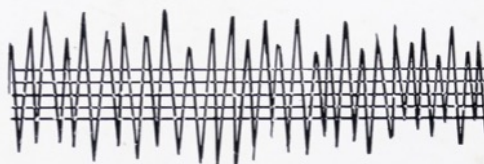
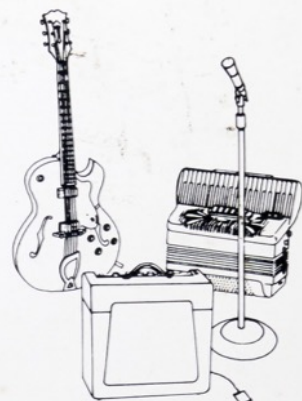
Small, convenient size!
Only 14¾" x 10" x 5¼".

Guild

ECHOREC

ECHO, REVERB, DELAY, REPEAT—WITHOUT TAPE!

■ Professional audio quality for imaginative application of echo, reverb, swell, repeats, delay and decay to guitar, accordion, piano and vocals . . . for recording, radio, television and film studios, clubs and lounges. Echorec takes the place of costly, cumbersome and difficult-to-operate echo chamber equipment . . . brings exciting electronic effects within the reach of the individual performer and budget-minded studio or club.



Model 1

MODEL 1 ECHOREC

■ Eliminates tapes completely, because of "Magnetic Memory" with solid steel magnetic pick-up and five recording heads. Sound impulse records and re-records as controlled by dial settings, while electronic "eraser" continuously wipes recording impulse off heads for continuous re-recording.

Has 4 dials: for off-on and input volume; echo and length of swell; volume of echo swell; speed of echo swell, in 12 positions. Single channel, with input for one instrument, output for one amplifier.

Operates on 110-280 volts AC, 50-60 cycles. Input and output impedance is 50K ohms. Size 12½ inches long, 9¾ inches wide, 7½ inches high. Weight 19 lbs. Grey metal cabinet, in two-tone carrying case. Complete with heavy-duty input cord and foot pedal for remote control.

Dual or triple adapter jack is available for 2 or 3 extra instruments.



Model 2

MODEL 2 ECHOREC

■ This 3-channel Echorec has inputs for 3 instruments and outputs for 3 amplifiers. Instrument inputs can be doubled up to "infinity", for almost limitless combinations. Push-button channel selector permits vocalists and/or instrumentalists to cut in echo or by-pass echo direct to amplifier. As in Model 1, Model 2 eliminates tapes completely because of "Magnetic Memory" with solid steel magnetic pick-up and five recording heads. Sound impulse records and re-records as controlled by dial settings, while electronic "eraser" continuously wipes recording impulse off heads for continuous re-recording.

Has 6 dials: for off-on and input volume; echo and length of swell; volume of echo, repeat and swell; bass and treble; echo, repeat and swell selector; speed of echo swell, in 12 positions.

Operates on 110-280 volts AC, 50-60 cycles. Input and output impedance is 50K ohms. Size 16¾ inches long, 11¼ inches wide, 8½ inches high. Weight 29 lbs. Complete with heavy-duty input cord and foot pedal for remote control.

No tapes!

■ Inset shows Model 2 Echorec with top removed. Note housing for solid steel magnetic pick-up with five recording heads and electronic "eraser", eliminating all tapes. Model 1 has same recording system. Both have built-in cooling device.

