

Made <sup>TO</sup> <sub>BE</sub> Played  
SINCE 1953





*AN* AMERICAN CLASSIC  
**MADE NEW**

After a short hiatus, Guild is making acoustic guitars in the USA again — & they're some of the best acoustics we have ever produced. Honoring a heritage of quality and value established so long ago, we're poised to inspire the next generation of guitarists.



# USA MADE



## F-512

12-string • Jumbo shape •  
Solid Sitka spruce top • Solid  
Indian rosewood back & sides •  
Mother-of-pearl appointments  
• Adirondack spruce braces •  
Nitrocellulose finish • Available  
with LR Baggs pickup (F-512E)

Finishes



**SOLID SITKA SPRUCE TOPS • SOLID  
INDIAN ROSEWOOD BACKS AND SIDES**



Finishes



**F-55**

Jumbo shape • Mother-of-pearl appointments • Adirondack spruce braces • Nitrocellulose finish • Available with LR Baggs pickup (F-55E)



Finishes



**D-55**

Dreadnought shape • Mother-of-pearl appointments • Adirondack spruce braces • Nitrocellulose finish • Available with LR Baggs pickup (D-55E)



## **D-40 Traditional**

Dreadnought shape • Solid Sitka spruce top • Solid African mahogany back & sides • Adirondack spruce braces • Tortoiseshell appointments • Nitrocellulose finish

# USA MADE



## F-40

Jumbo shape • Solid Sitka spruce top • Solid African mahogany back & sides • Satin finish • Available with LR Baggs pickup (F-40E)



## D-40

Dreadnought shape • Solid Sitka spruce top • Solid African mahogany back & sides • Satin finish • Available with LR Baggs pickup (D-40E)

# USA MADE



## D-20

Dreadnought shape • All-solid mahogany body • Rosewood fingerboard & bridge • Satin finish • Available with LR Baggs pickup (D-20E)



## M-20

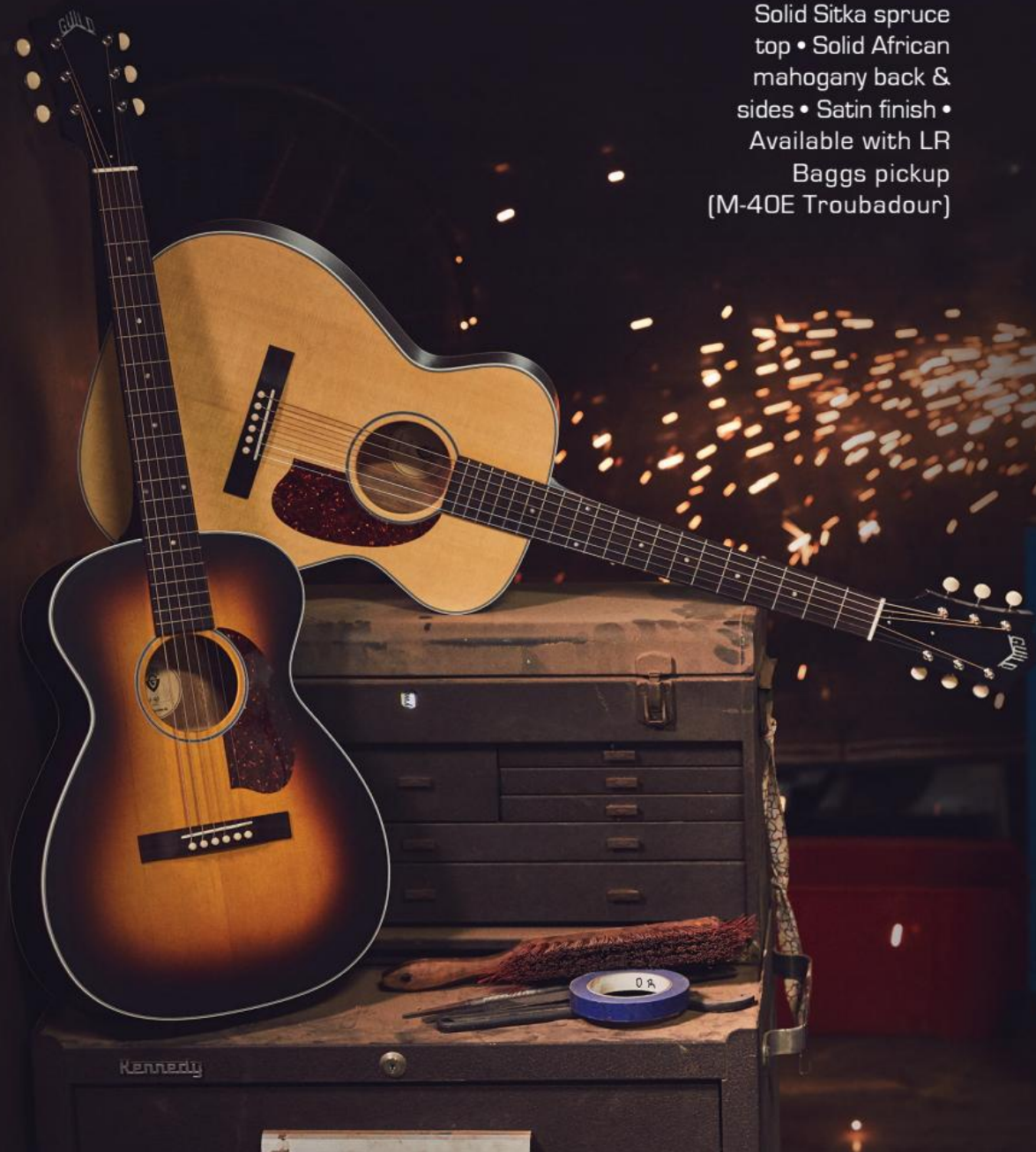
Concert shape • All-solid mahogany body • Rosewood fingerboard & bridge • Satin finish • Available with LR Baggs pickup (M-20E)



# MADE TO BE PLAYED

## **M-40 Troubadour**

- Concert shape
- Solid Sitka spruce top
- Solid African mahogany back & sides
- Satin finish
- Available with LR Baggs pickup (M-40E Troubadour)



WESTERLY COLLECTION  
*THE 150s*



**F-150CE**

Jumbo shape with cutaway •  
Fishman electronics



**F-1512E**

Jumbo 12-string •  
Fishman electronics

**SOLID SITKA SPRUCE TOPS • SOLID  
INDIAN ROSEWOOD BACKS AND SIDES**



**OM-150CE**

Orchestra shape with cutaway • Fishman electronics

**D-150**

Dreadnought shape • Available left-handed (D-150L)

**D-150CE**

Dreadnought shape with cutaway • Fishman electronics

WESTERLY COLLECTION  
*THE 140s*



**M-140E**

Concert shape •  
Fishman electronics



**OM-140E**

Orchestra shape •  
Fishman electronics

**SOLID SITKA SPRUCE TOPS • SOLID  
AFRICAN MAHOGANY BACKS AND SIDES**



Finishes



**OM-140CE**

Orchestra shape with cutaway • Fishman electronics • Available left-handed (OM-140LCE)



Finishes



**D-140**

Dreadnought shape • Available with Fishman electronics (D-140E)

WESTERLY COLLECTION  
*THE 140s*



**D-140CE**

Dreadnought shape with cutaway • Fishman electronics

**B-140E Bass**

Jumbo shaped acoustic bass • Fishman electronics



WESTERLY COLLECTION  
*THE 120s*



**M-120**

Concert shape • Available with  
Fishman electronics (M-120E)



**M-120LE**

Concert shape • Left-handed  
• Fishman electronics



**ALL SOLID AFRICAN MAHOGANY  
TOPS, BACKS AND SIDES**



**OM-120**

Orchestra shape



**D-120**

Dreadnought shape

WESTERLY COLLECTION  
*THE 120s*



Finishes



**D-120CE**

Dreadnought shape with cutaway • Fishman electronics

**D-1212E**

Dreadnought • 12-String • Fishman electronics



## **Jumbo Junior**

- Solid spruce top
- Mahogany back (arched) & sides
- Guild AP-1 electronics

# JUMBO JUNIOR



## **Jumbo Junior Bass**

Reduced jumbo shape • Solid spruce top • Flamed maple back (arched) & sides • Guild AP-1 electronics



## **Jumbo Junior MH**

Reduced jumbo shape • Solid spruce top • Mahogany back (arched) & sides • Guild AP-1 electronics



## **Jumbo Junior Flamed Maple**

Reduced jumbo shape • Solid spruce top • Flamed maple back (arched) & sides • Guild AP-1 electronics

WESTERLY COLLECTION  
*THE 200s*



**M-240E**

Concert shape • Guild AP-1 electronics



**M-240E Troubadour**

Concert shape • DeArmond Tone Boss pickup

WESTERLY COLLECTION  
THE 200s



**D-240E FM**

Dreadnought shape • Flamed mahogany back (arched) & sides • Guild AP-1 electronics  
• Available with mahogany back & sides (D-240E)



**OM-240E**

Orchestra shape • Guild AP-1 electronics

**SOLID SPRUCE TOPS • MAHOGANY SIDES •  
ARCHED MAHOGANY BACKS**



**OM-240CE**

Orchestra shape with cutaway • Guild AP-1 electronics



**F-2512E Maple**

Jumbo • 12-string • Maple back (arched) & sides • Guild AP-1 electronics

NEWARK ST. COLLECTION

# BASSES



## Starfire Bass

Semi-hollow • Mahogany body •  
Guild BiSonic Bass pickup



## Starfire Bass II Flamed Maple

Semi-hollow • Flamed maple body •  
Dual Guild BiSonic Bass pickups





## Starfire Bass II

Semi-hollow •  
Mahogany body • Dual Guild  
BiSonic Bass pickups



## Jetstar

Solid mahogany body • Dual LB-1 pickups • Stopbar tailpiece



NEWARK ST. COLLECTION

# JETSTAR

Since '53, we've always had a different sound. It's a vintage vibe & feel that only gets better with age, & the all-new Jetstar does not disappoint. With its original funky look & feel, this is the perfect guitar to disrupt the norm.

The Jetstar features a solid mahogany body, dual LB-1 pickups and Guild's rare pearloid pyramid logo on a scroll-shaped headstock.

Finishes



---

NEWARK ST. COLLECTION

# POLARA



## S-100 Polara

Solid mahogany body •  
Dual HB-1 pickups



## S-100 Polara

Solid mahogany body •  
Dual HB-1 pickups

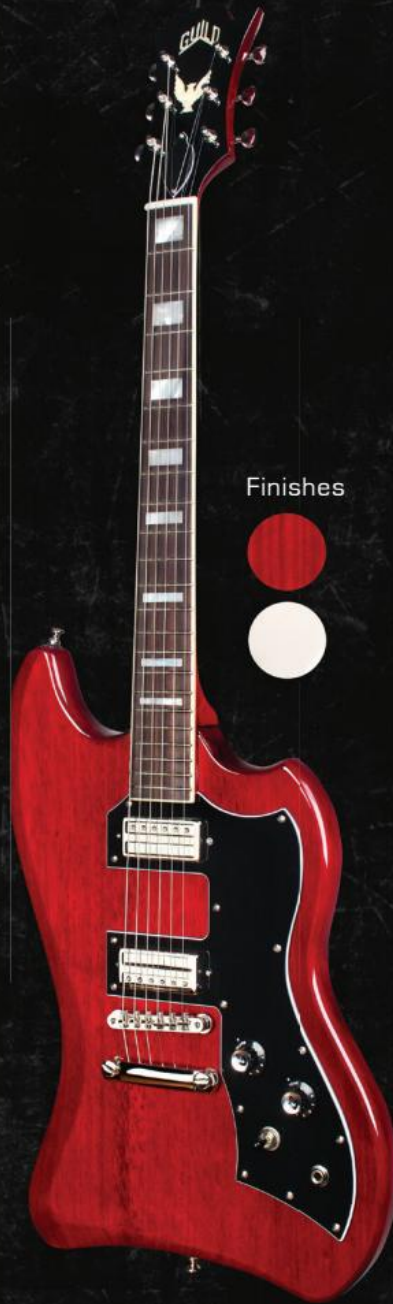
## S-100 Polara

Solid mahogany body •  
Dual HB-1 pickups



NEWARK ST. COLLECTION

# T-BIRD



Finishes

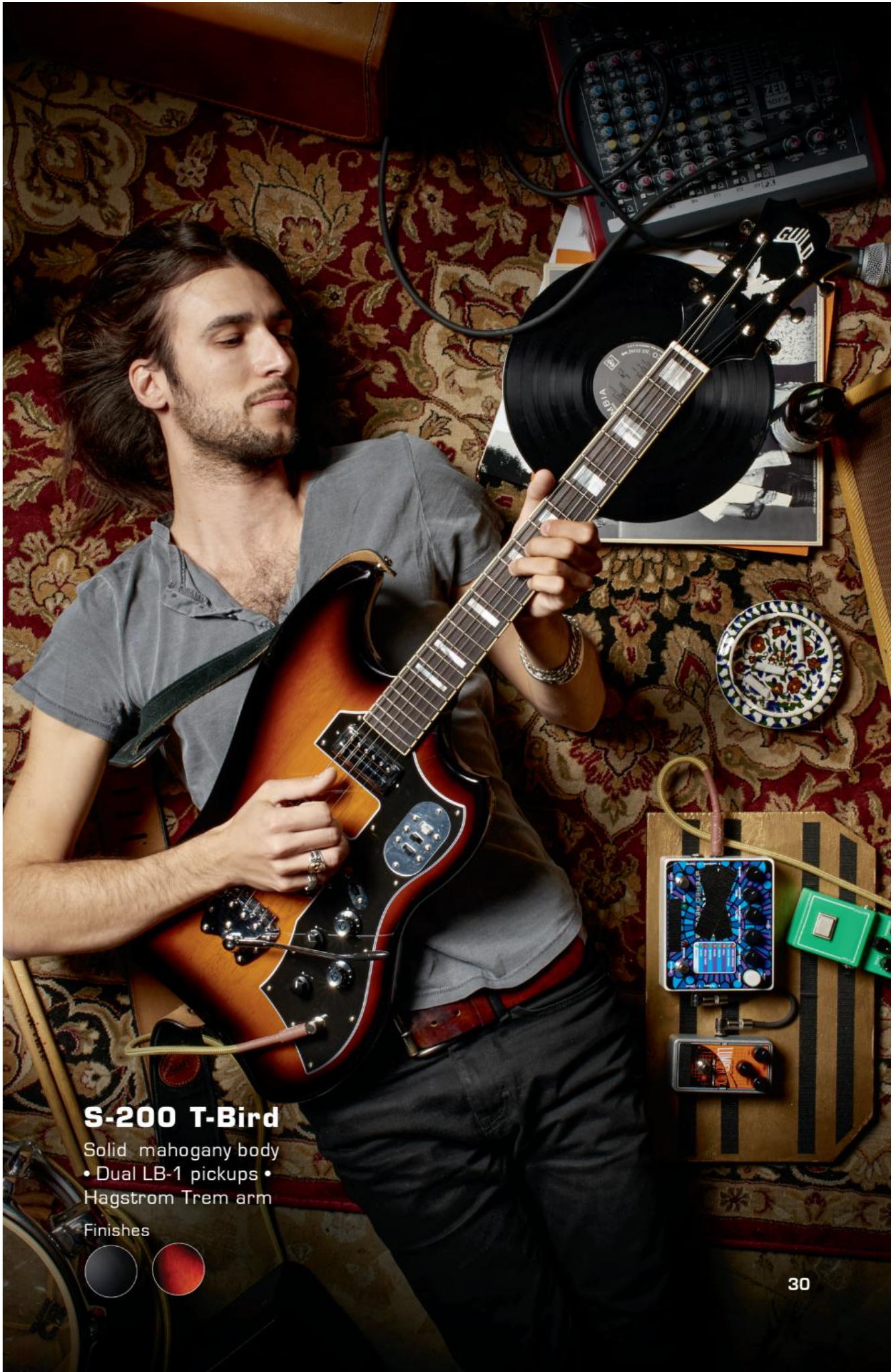


## T-Bird ST

Solid mahogany body • Dual  
LB-1 pickups • Stopbar  
tailpiece

## T-Bird ST P90

Solid mahogany body • Dual  
Franz P-90 Soapbar pickups  
• Stopbar tailpiece



## S-200 T-Bird

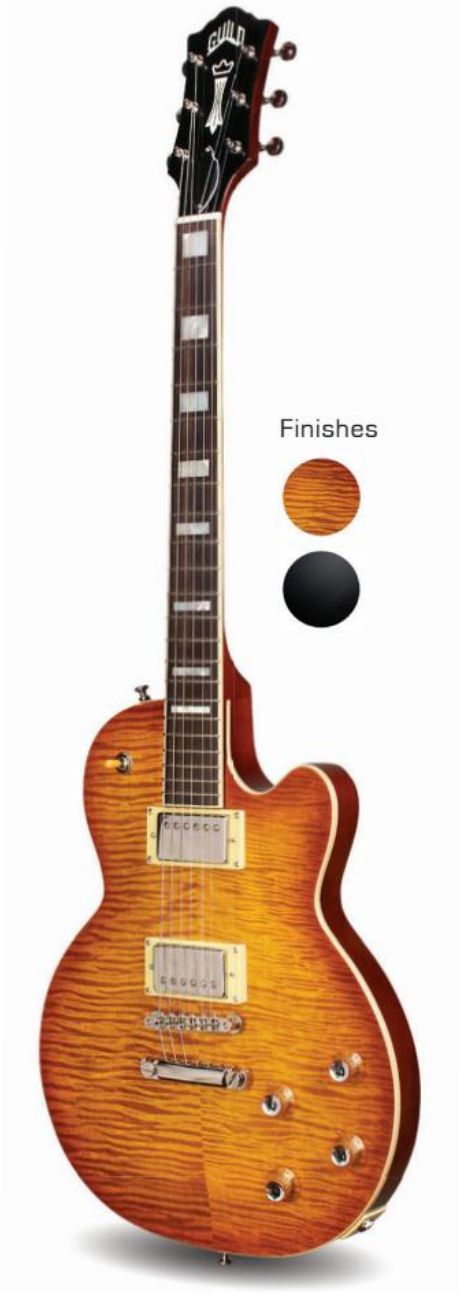
- Solid mahogany body
- Dual LB-1 pickups
- Hagstrom Trem arm

Finishes



NEWARK ST. COLLECTION

# BLUESBIRD



Finishes



## Bluesbird

Carved maple top • Chambered mahogany body • USA-made Seymour Duncan pickups • TonePros locking stopbar tailpiece



Finishes



## M-75 Aristocrat

Chambered mahogany body • Spruce top • Dual Franz P90 Soapbar pickups • Harp tailpiece



NEWARK ST. COLLECTION

# STARFIRE



Finishes



## Starfire II ST

Hollow mahogany body  
• Dual LB-1 pickups •  
Stopbar tailpiece



Finishes



## Starfire III

Hollow mahogany body •  
Dual LB-1 pickups • Guild  
Vibrato Tailpiece

# STARFIRE



## Starfire IV

Semi-hollow mahogany body • Dual LB-1 pickups • Harp tailpiece

## Starfire V

Semi-hollow mahogany body • Dual LB-1 pickups • Guild Vibrato Tailpiece • Block inlays • Master volume knob

## Starfire VI

Semi-hollow AAA flamed maple body • Dual LB-1 pickups • Guild Vibrato Tailpiece • Gold hardware • V block inlays • Master Volume knob

# MAKE SOME NOISE WITH THE

## STARFIRE IV ST

Semi-hollow mahogany body •  
Dual LB-1 pickups •  
Stopbar tailpiece

- ◆ Natural Flamed Maple
- ◆ Emerald Green
- ◆ Antique Sunburst



NEWARK ST. COLLECTION

# HOLLOWBODY



## T-50 Slim

Thinline maple body • Franz P90 Dog Ear pickup • Harp tailpiece



## X-175B Manhattan

Spruce top • Maple back & sides  
• Dual Franz P90 Dog Ear pickups  
• Guild Vibrato Tailpiece • Also available with harp tailpiece [X-175]

## A150 Savoy

Spruce top • Flamed maple back & sides  
• Floating DeArmond  
1000 Rhythm Chief  
pickup • Harp tailpiece

Finishes





RHYTHM  
CHIEF  
1000

RHYTHM  
CHIEF  
1100

**PICK UPS**

Achieve that classic Guild tone with genuine reissues of Guild electronics. Iconic products include the LB-1 "Little Bucker" (T-Bird, Starfire) & the HB-1 (S-100 Polara). Guild pickups are available after-market for players looking to replace vintage pickups or personalize their Guild guitar.

FRANZ  
P-90  
SOAPBAR

BS-1  
BISONIC  
BASS

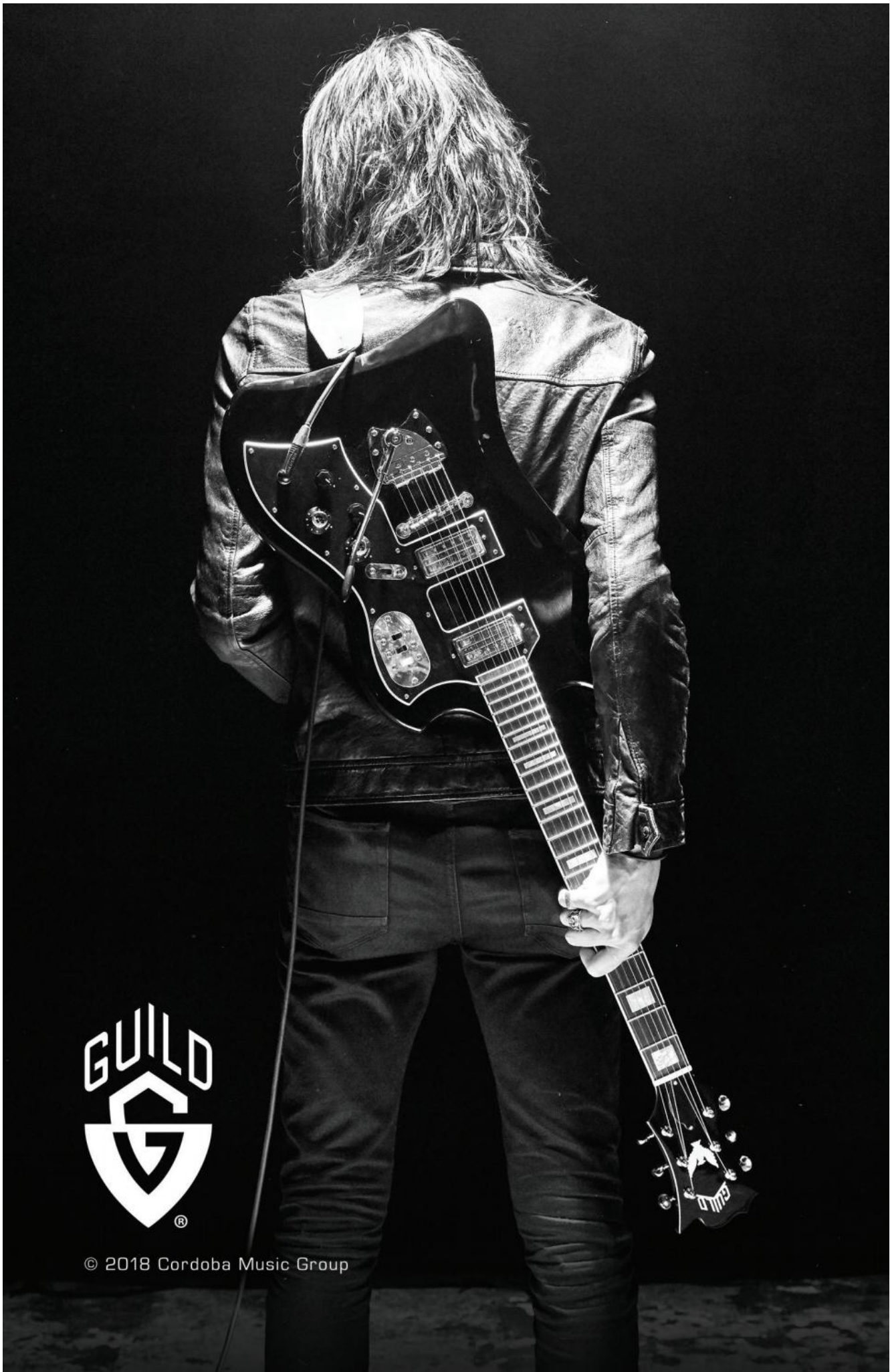
# DeArmond™

Founded in the 1930s, DeArmond is a manufacturer of guitar parts and accessories most known for easy-to-install guitar pickups. Now considered cult classics for their retro vibe and vintage tone, many DeArmond models were used by guitar brands like Guild throughout the 1950s, 60s and 70s.

With state-of-the-art products such as the Tone Boss acoustic soundhole pickup (2017) and forthcoming re-releases of original designs, DeArmond continues to offer vintage-inspired, user-friendly products for guitarists of all types.



Top: Rhythm Chief 1000 Floating Single Coil Pickup  
Bottom: Tone Boss Magnetic Soundhole Pickup



© 2018 Cordoba Music Group