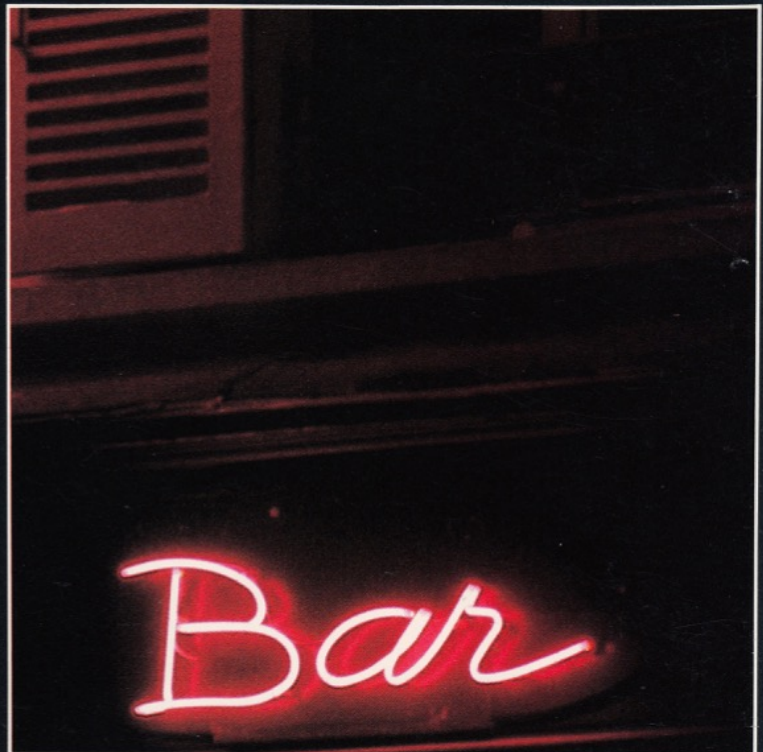
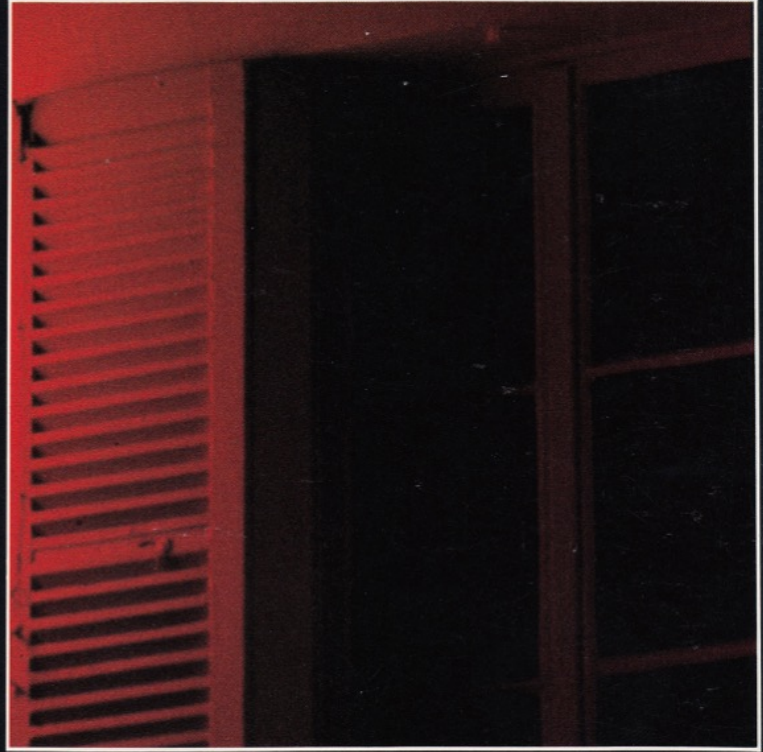
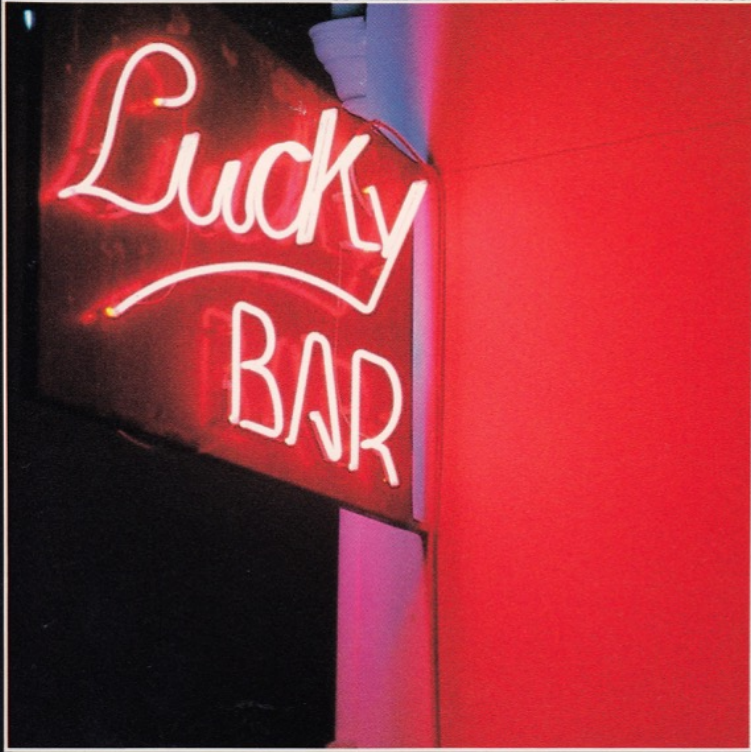


GUILD

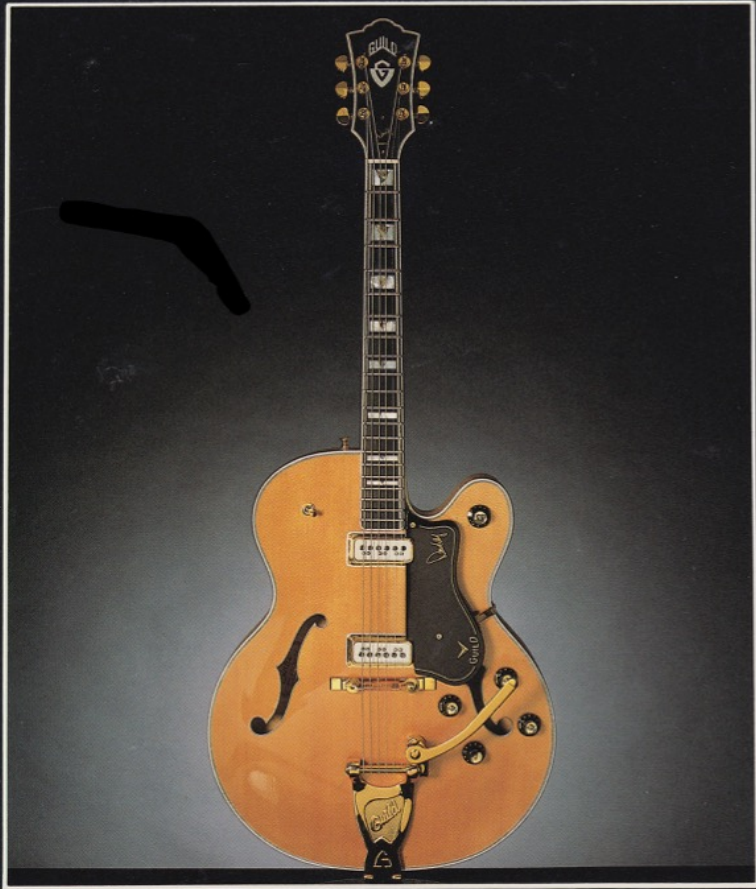
Superior

Electric

Guitars



Duane Eddy DE500

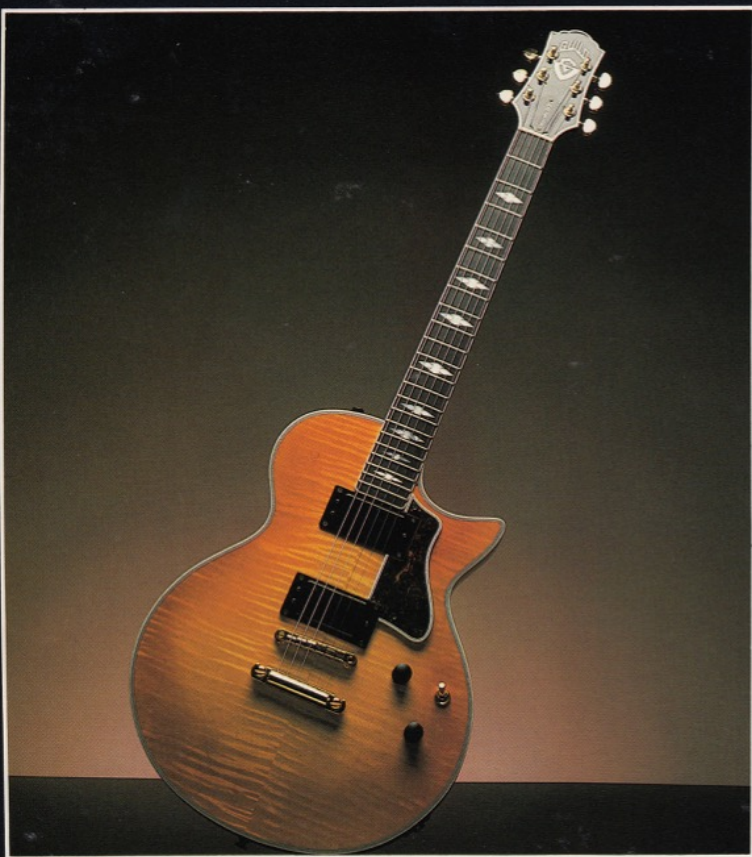


Starfire IV



Bluesbird

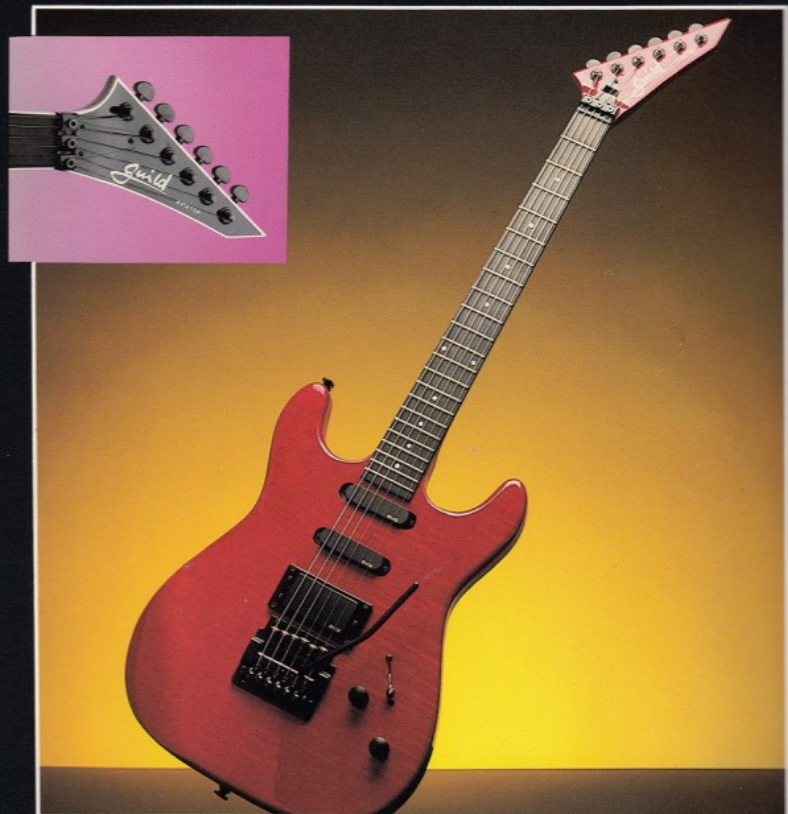
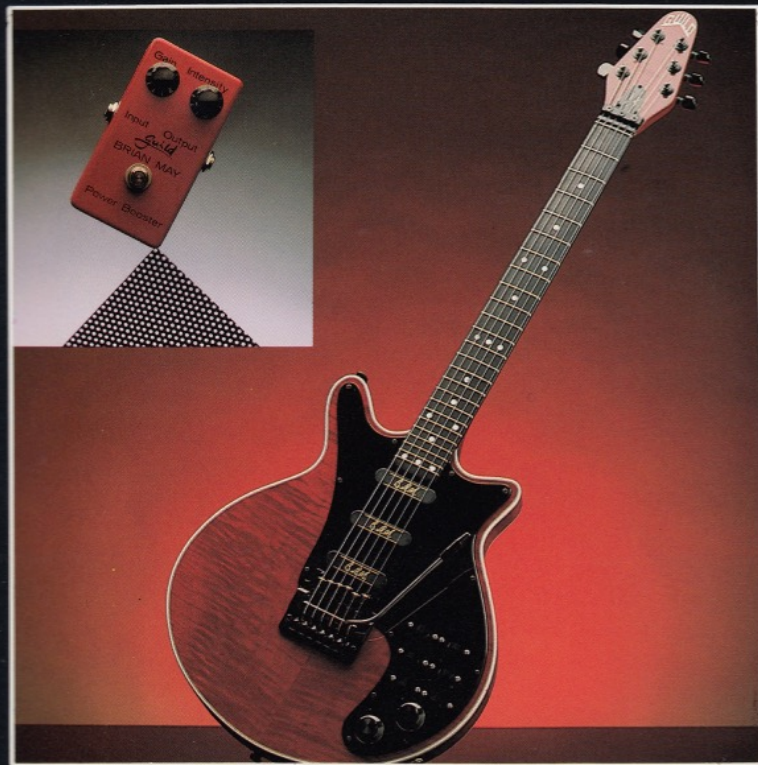
Flyer S281

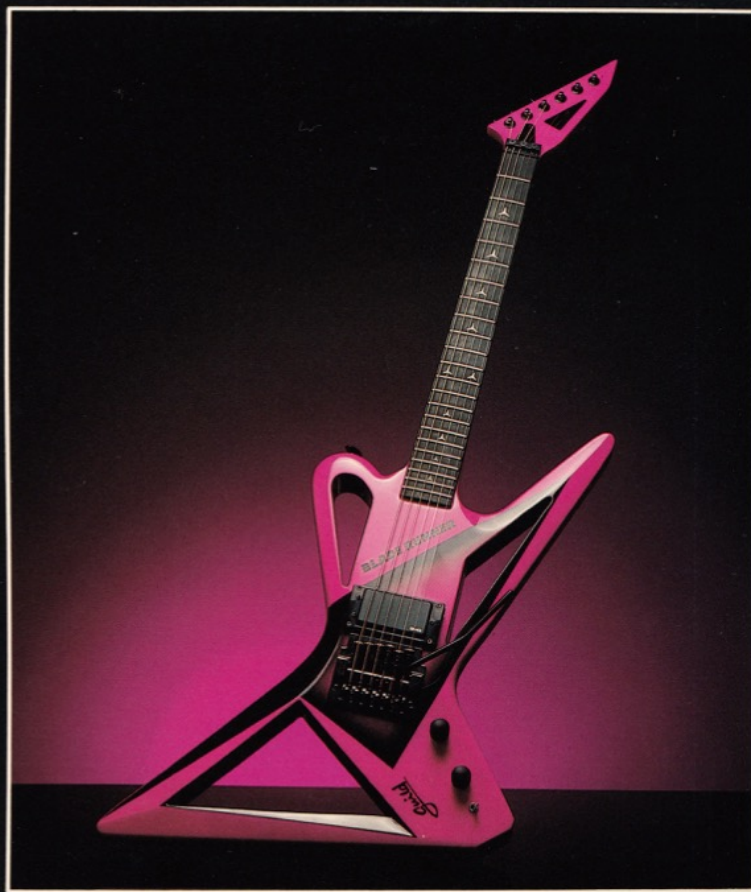
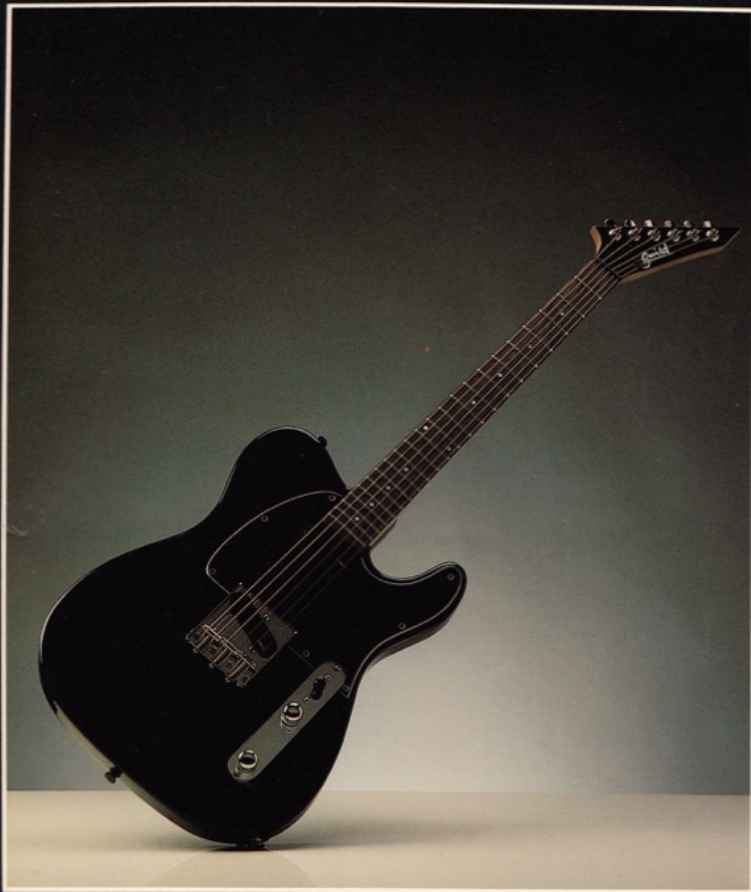


Flamed Maple Top



Spruce Top





Artist Award

Guild's commitment to quality in craftsmanship, and dedication to the requirements of professional musicians finds expression in the Artist Award. All woods are rare and imported. The top is of the highest grade, hand-carved spruce. The back is hand-carved maple selected for use in cellos. It has a five piece maple neck, elaborate binding, super deluxe inlaid headstock and Grover Imperial tuners. Production of this model is twelve guitars per year. Originally designed by and created for the personal use of Alfred Dronge, the founder of Guild Guitars. Hand made in the USA.

Specifications:

Model: Artist Award
Overall length: 44"
Body length: 20³/₄"
Body width: 17"
Body depth: 3¹/₂"
Scale length: 25⁵/₈"
of frets: 20
Neck width at nut: 1¹¹/₁₆"

Materials:

Top: Solid Carved Spruce
Sides & back: Solid Curly Maple
Back: Solid Carved Curly Maple
Neck: 5 pcs. Laminated Neck
Fingerboard: Ebony
Neck joins body at 14th fret
Binding: ABS Binding
Inlays: Standard Guild Inlay Blocks

Mini-Manhattan X170

The affordable X170 Mini-Manhattan is Guild's newest version of an old favorite jazz model the X175-Manhattan. The lighter weight, more compact body and new California Pickups give it a comfort and tone not previously available in a high quality handmade jazz guitar. The body is made of flamed maple. The Mini-Manhattan comes in a clear vintage finish or sunburst. Available left handed. Handmade in the USA.

Specifications:

Model: X-170
Overall length: 41¹/₂"
Body length: 20"
Body width: 16⁵/₈"
Body depth: 2¹/₂"
Scale length: 24³/₄"
of frets: 20
Neck width at nut: 1⁵/₈"

Materials:

Top: Curly Maple
Sides & back: Curly Maple
Body: Curly Maple
Neck: 3 pcs Laminated Maple
Fingerboard: Rosewood—Bound
Neck joins body at 14th fret
Binding: Top and Back ABS Binding
Inlays: Blocks

X500

The X500 is a deluxe premier quality instrument for the professional. In continuous production since 1952, this guitar is built with selected spruce top, curly maple sides and back, a 5-piece maple neck, inlaid ebony fingerboard and engraved gold tailpiece. Available in limited numbers for ultimate quality and versatility. Handmade in the USA.

Specifications:

Model: X-500
Overall length: 42"
Body length: 20³/₄"
Body width: 17"
Body depth: 3¹/₂"
Scale length: 24³/₄"
of frets: 20
Neck width at nut: 1⁵/₈"

Materials:

Top: Spruce Laminated
Sides & back: Curly Maple Laminated
Body: Back Curly Maple Laminated
Neck: 5 pcs. Laminated Maple
Fingerboard: Ebony
Neck joins body at 14th fret
Binding: White ABS
Inlays: Standard Guild Inlay Block
Bridge: Ebony

The Brian May (BHMI)

The Brian May guitar is a faithful reproduction of the guitar built and made famous by Brian May of Queen. It is an absolutely unique guitar. Features include a unique switching and control system as well as a wide, yet comfortable neck. Its interior construction features an acoustic chamber.

It comes standard with a deluxe Kahler Vibrato. This guitar is the only guitar Brian May has used for 20 years. Through all his visionary and progressive music it has met his demands which are among the most critical in popular music. This model comes either as a solid mahogany body or with flamed maple tops on mahogany. Pickups are exact duplications of the old Burns tri-sonic reproduced accurately by DeMarzio. Available left handed. Handmade in the USA.

Specifications:

Model: Brian May (BHMI)
Overall length: 39"
Body length: 14³/₄"
Body width: 13³/₄"
Body depth: 1¹/₂"
Scale length: 24"
of frets: 24
Neck width at nut: 1¹³/₃₂"

Materials:

Top: Flamed Maple or Mahogany
Sides & back: Solid Mahogany
Body: Solid Mahogany
Neck: Solid Mahogany
Fingerboard: Ebony
Neck joins body at 20th fret
Binding: White ABS
Inlays: Dots

Aviator S284

The S284 Aviator is destined to be a rock and roll classic. Its traditional shape, its evolutionary features such as a glue in neck for easier access to the higher frets, and its offset headstock give it wide appeal for any electric guitar player whether you choose rock and roll, or heavy metal. The guitar comes standard with an ebony fingerboard and is available in two pickup combinations: 1 humbucker and 2 single coils with coil tap, and three single coils with fat control optional. Both traditionalists and rockers will find this guitar fits just right. The deluxe S285 (not illustrated) version features binding on the fingerboard and headstock, along with sunrise inlay. Available left handed. Handmade in the USA.

Specifications:

Model: S-284
Overall length: 38³/₄"
Body length: 15¹/₄"
Body width: 12¹/₂"
Body depth: 1³/₄"
Scale length: 25⁵/₈"
of frets: 22
Neck width at nut: 1⁵/₈"
Materials:
Body: Poplar or Flamed Maple
Neck: Hard Maple or Flamed Maple
Fingerboard: Ebony
Neck joins body at 19th fret
Binding: None
Inlays: Dots

T-200

The new Roy Buchanan model T-200 was designed under Roy's supervision. A traditional design modified and built to his demanding specifications. This guitar will satisfy and surpass your expectations. The bridge is solid brass, hand-machined for sustain and bite. Handmade in the USA.

Specifications:

Model: T-200 Roy Buchanan
Overall length: 39"
Body length: 15³/₄"
Body width: 12³/₄"
Body depth: 1³/₄"
Scale length: 25⁵/₈"
of frets: 22
Neck width at nut: 1⁵/₈"
Materials:
Body: Poplar Solid
Neck: Solid Maple
Fingerboard: Rosewood
Neck joins body at 17th fret

Blade Runner X100

The X100 Bladerunner was designed by David Andrews Guitar Research for heavy metal. One of the first models made was presented to Eddy Ojeda of Twisted Sister. Guild has refined this model and designed a unique electronic system that results in a very lightweight guitar that is probably capable of greater sustain than any guitar of any weight ever made. The designers say, "it sustains until you shut it off." This is due to the woods used, the electronic components, as well as the guitar's design. The guitar comes standard with one EMG 81 humbucker, a coil tap, a fat control, and a deluxe Kahler Vibrato. Handmade in the USA.

Specifications:

Model: X-100
Overall length: 44"
Body length: 20"
Body width: 15¹/₂"
Body depth: 1³/₄"
Scale length: 25⁵/₈"
of frets: 22
Neck width at nut: 1⁵/₈"
Materials:
Body: Poplar
Neck: Hard Maple
Fingerboard: Ebony
Neck joins body at 19th fret
Binding: None
Inlays: Mercedes Stars

Pilot SB602

The 602 Pilot Bass is the most popular new bass introduced in many years. It is currently being played by many top groups both in America and Europe. It is lightweight with powerful EMG pickups as a standard feature. The Pilot Bass is the logical next step in the design evolution of the bass. It is also available as a fretless model with or without markers. D tuners are also available as an option on the Pilot. Available as left handed. Handmade in the USA.

Specifications:

Model: SB-602 or SB-604
Overall length: 46"
Body length: 20¹/₂"
Body width: 13"
Body depth: 1¹/₂"
Scale length: 34"
of frets: 22
Neck width at nut: 1¹/₂"
Materials:
Body: Poplar or Flamed Maple
Neck: Hard Maple or Flamed Maple
Fingerboard: Rosewood
Neck joins body at 17th fret
Binding: None
Inlays: Dots

Sprint S270
(not illustrated)

Based on the traditional design in rock and roll the S270 Sprint was designed in response to many requests. With Guild's new fast playing bolt on neck, high frets and natural wood neck finish, this is a step forward in popular priced solid body guitars. This guitar is available with a single or double EMG pickup combination and a deluxe heavy duty Kahler standard. Handmade in the USA.

Starfire IV

The thin-body semi-hollow Starfire first achieved popularity in the 60's. Sweet, singing sustain and bluesy tone characterize the sound of the Starfire. All maple body, ebony fingerboard, inlaid headstock, and 3 piece maple neck are standard features of this quality guitar. A master volume and three-way selector switch is also featured on the Starfire. Handmade in the USA.

Specifications:

Model: Starfire 4
Overall length: 42"
Body length: 18"
Body width: 16 $\frac{1}{2}$ "
Body depth: 1 $\frac{5}{8}$ "
Scale length: 24 $\frac{3}{4}$ "
of frets: 22
Neck width at nut: 1 $\frac{5}{8}$ "

Materials:

Top: Laminated Maple
Sides & back: Laminated Maple
Back: Laminated Maple
Neck: 3 pcs. Laminated Maple
Fingerboard: Ebony
Neck joins body at 18th fret
Binding: ABS White Body & Neck
Inlays: Dots

The Bluesbird

The Bluesbird is based on a traditional body design that Guild originally manufactured in the late 1950's. The current solid body glued-in-neck version was designed with Brian Setzer. The model comes with two pickup configurations, 3 single coils, a humbucker and 2 single coils. Coil taps on humbuckers, are optional. Available left handed. Handmade in the USA.

Specifications:

Model: Bluesbird
Overall length: 40 $\frac{1}{2}$ "
Body length: 16 $\frac{3}{4}$ "
Body width: 13 $\frac{1}{2}$ "
Body depth: 1 $\frac{3}{4}$ "
Scale length: 25 $\frac{5}{8}$ "
of frets: 22
Neck width at nut: 1 $\frac{5}{8}$ "

Materials:

Body: Poplar or Flamed Maple
Neck: Hard Maple or Flamed Maple
Fingerboard: Ebony
Neck joins body at 17th fret
Binding: None
Inlays: 3 pcs. Mother Pearl

Flyer S281

The S281 Flyer with a bolt on neck in the traditional rock and roll style that is new to Guild and is built with natural finish neck and 22 high frets, with an offset headstock. Available left handed. Handmade in the USA.

Specifications:

Model: S-281
Overall length: 40"
Body length: 18 $\frac{1}{2}$ "
Body width: 13"
Body depth: 1 $\frac{3}{4}$ "
Scale length: 25 $\frac{5}{8}$ "
of frets: 22

Materials:

Body: Poplar or Flamed Maple
Neck: Hard Maple or Curly Maple
Fingerboard: Rosewood
Neck joins body at 17th fret
Binding: None
Inlays: Dots

SB-605

An advanced version of the Pilot bass. The SB-605 is set-up for a low B string and features a D-tuner for expanded tuning. The neck is wide enough to get your fingers in yet is surprisingly comfortable for all night ease of playing. The SB-605 is lightweight with powerful EMG pickups as a standard feature. Handmade in the USA.

Specifications:

Model: SB-605

Overall length: 46"

Body length: 22"

Body width: 13"

Body depth: 1½"

Scale length: 34"

of frets: 22

Neck width at nut: 1⅞"

Materials:

Body: Solid Maple or Poplar

Neck: Solid Maple

Fingerboard: Rosewood or Ebony

Neck joins body at 17th fret

Nightbird

Nightbird

The Nightbird guitar is one more evolutionary step in guitar making that can only come from Guild. This model features a hand carved spruce top with blocks under each pickup to prevent feedback. The guitar contains a deep 'U' shaped acoustic chamber over which is installed a hand carved spruce top. The purpose of this is to allow the guitar to "sing" with a unique tone similar to the popular double cutaway guitars of the 60's and 70's, with less mass and weight than one would expect. The electronics are English "Armstrong" pickups with coil taps, or specially designed EMG pickups. Hand carved flamed maple tops are also available. Available left handed. Handmade in the USA.

Specifications:

Model: Nightbird

Overall length: 39¾"

Body length: 17½"

Body width: 13¾"

Body depth: 1⅞"

Scale length: 24¾"

of frets: 22

Neck width at nut:

1⅞"

Materials:

Top: Sitka Spruce

Sides & back: Mahogany

Body: Mahogany

Neck: Mahogany &

Ebony-Bound

Fingerboard: Ebony-

Bound Pearloid

Neck joins body at 16th fret

Binding: Top only in Pearloid

Inlays: Diamonds

Pickguard: Bound Shell

Our History

Guild Guitars was established in 1952 by Alfred Dronge. The first guitar from his small workshop was handmade with expensive rare woods, costly lacquers, hand wound pickups for the electrics, and an attention to detail that only a musician first and a businessman second could give to a guitar.

The workshop was located in New York City. It was a common sight to see the top jazz, studio, and touring guitarists at Guild. Their suggestions were always listened to carefully. The high standard of quality established at Guild continues to this day. Today Guilds are handmade in Westerly, Rhode Island, where quality, innovation and service are the most important goals of Guild's current President, Mark Dronge, the son of Guild's founder. Guild still listens carefully.

The woods used in Guild Guitars are selected by our craftsmen. They travel to the source where carefully chosen logs are opened and only the highest grade woods are purchased for creating Guild Guitars.

The name Guild is derived from the Master Craftsmen Guilds of the Middle Ages. During that time, artisans who had achieved the highest skills were permitted to join these Guilds. Today the name Guild expresses the highest standard of wood craftsmanship and the art of guitar making.